



Christ Church
CE Primary School

Growing and Learning Together in Christ

Head Teacher: Mrs S. Howard

CHRIST CHURCH NEWSLETTER

Friday 9th May 2025, Issue 30

Weekly News & Updates

Please ensure that anyone e.g. grandparents collecting children from school with a need to use the car park, are made aware of the new timings and restrictions. Cars should not be moving on the car park until 3.40pm when the gates will re-open. This is all about the safety of pupils.

Thankyou, Mrs Howard



Please remember to order your child's dinner in advance on SchoolGrid. Ordering at home saves time in the classroom. Thank you!



Ice pops and lollies will be on sale for KS1 and KS2 next Monday, Wednesday and Friday. Ice pops will cost 50p and lollies £1.00. Pupils can buy them at morning break and after school.



Please try to bring in any loose change you have lying around for the loose change challenge. The class who collects the most money gets a treat! All proceeds go to FRIENDS.

Week commencing 12th May:

Monday:

- Netball Match after school against Greenmount

Tuesday:

- Y1,2&3 Team Sports until 4.30pm

Wednesday:

Thursday:

- Y4,5&6 Cricket Club until 4.30pm

Friday:

Pictures from the week



Class attendance this week:

Reception 100%

Ash 96%

Cedar 100%

Elm 95%

Larch 98%

Maple 94%

Oak 100%

This week's home reading champions:

KS1 - 83% Cedar

KS2 - 85% Elm & Oak

House Points

Howarth - 1116

Wood - 1153

Peel - 1079

Kay - 1064

[Facebook](#)

Cabin Crew

You are now able to book before & after school club sessions via School Money for the weeks commencing 12th & 19th May 2025.

When booking your Cabin Crew sessions, please **check your confirmation email thoroughly to ensure that the sessions you have booked meet your actual requirements. Please check dates and sessions are correct and meet your needs.** If club is full we have no flexibility to accommodate your child. If your child is taken to club in these circumstances, **extra charges will be applied in addition to the normal club fees.**



Class Reminders

Seedlings Class:

- Please come in trainers on Thursdays for PE.
- Please have a hat in school and also remember to wear all day sun lotion on sunny days.

Saplings Class:

- Reading books will be changed on a Friday. Please ensure that your child brings their book bag and reading book to school every day.
- Full PE kit needed for PE each Wednesday.

Ash Class:

- Reading books are due in school on Fridays. Please make sure reading records are signed so we can send a new book home.
- Please remember to apply sun cream to your child before school if the weather is nice.

Cedar Class:

- Cedar had a lovely trip to the park this week. A special thank you to our helpers who joined us.
- P.E. Wednesdays and Thursdays.
- Reading books will continue to go out on Fridays to be returned on the following Friday.
- Spelling tests will be held every Friday. Please support children to learn their spellings at home weekly.

Elm Class:

- Please complete the tasks in the blue home work book and return each Monday.
- We will be visiting the library next on Tuesday 20th of May.
- RHS Bridgewater letter has been sent home, please consent and pay the voluntary contribution.

Larch Class:

- Year 4 multiplication check is after half term so any extra practise at home would be greatly appreciated.
- Reading books to be brought in on Tuesdays with a signed reading record.
- PE days are Monday and Thursday.
- Homework will be handed out on Thursdays and to be returned the following Thursday - Please see class page for weekly homework.

Oak Class:

- Guided Reading, maths and spag homework to be handed in on Monday.
- PE Monday and Thursday.
- Any outstanding Robinwood payments must be made as soon as possible.
- Some of the high schools have informed us of the transition days-
- Tottington-Tuesday 24th and Wednesday 25th June
- Woodhey-Tuesday 1st and Wednesday 2nd July

Maple Class:

- No homework this half term.
- PE Tuesdays and Wednesdays.
- Reading books and records due in on Thursdays.
- The Robinwood balance to be paid by 16.05.25.



Golden Book Stars of the Week

Nursery

Roman, Phoenix

Reception

Isla, Reyna

Ash

All of Ash Class

Cedar

Erin I, William, Imogen

Elm

All of Elm Class

Larch

Luke, Esme

Maple

Ashton, Isaac, Max

Oak

Joshua, Scarlett B, Sam



Christ Church
CE Primary School

Growing and Learning Together in Christ

Head Teacher: Mrs S. Howard

Diary Dates

Thursday 5th June 2025 - Y1, Y2 and Y3 Sports Day

Friday 6th June 2025 - Y4, Y5 and Y6 Sports Day

Wednesday 11th June 2025 - Cedar Class Assembly

Wednesday 18th June 2025 - Class Photographs

Friday 20th June 2025 - Summer Fair

Thursday 26th June 2025 - Nursery & Reception Class Assembly

[Term Dates Website Link](#)

Upcoming School Visits

[Robinwood Y6 Visit - 21st May - 23rd May 2025](#)

Mrs Dowsons Farm, Nursery & Reception Visit - 11th June 2025

[RHS Bridgewater Y3 Visit - Wednesday 9th July 2025](#)

Family Help Community Drop-In's



We know that every family will experience challenges and difficulties at different times in theirs and their children's lives, and that this is completely normal!

However, we also know that sometimes these problems can start impacting on family life, and at times 'asking for help' either seems too daunting, or embarrassing, or you may have no idea where to go, or who to ask for support!

We want to ensure that every family has access to the right help at the right time in the area that they live.

Therefore, our family help team will now be offering weekly drop-in sessions at various locations across the borough, so that parents, carers, grandparents or others!

Can come in and speak to one of our trained practitioners who will be able to offer advice, guidance, and support, or sign post you to the right service who can help.

We can offer one-to-one advice on a range of topics such as:

- Parenting
- Mental Health
- School or college
- Finances
- Parental conflict
- Friendships
- Sexual health
- Domestic abuse
- Family relationships & difficulties
- Substance misuse
- Housing
- General worries or queries

Where to find your local drop in

QR Code



Christ Church Primary School
Walshaw, Tottington, Bury BL8 3AX

Friday 8.45am – 10.30am

Fortnightly (starting Fri 28.02.2025)



**Join the
Fun at...**

EDSTART
SPORTS COACHING

EDSTART BURY HOLIDAY CLUBS

at Bury Grammar School

Soccer School / Multi Sports / Dance & Gymnastics

Tuesday 27th May – Friday 30th May

9am – 4:00pm

Wrap around care

7:30am - 9am and 4pm - 6pm

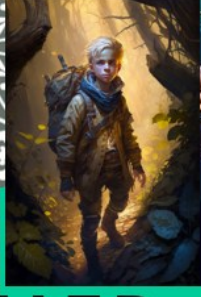
Ages:- 5 – 14 years old

PRESS HERE TO BOOK

For more information, contact bury@edstart.org.uk

Follow @edstartsports

A Summer Arts week for 7-11 year olds
At The Elton High School,
21st -25th July 9.30am -3pm.
Cost £85 Per child (places are limited)
Please email
perryh@eltonhigh.bury.sch.uk
to reserve a provisional place.



SUMMER ARTS WEEK 2025

21st JULY – 25th JULY