



CHRIST CHURCH NEWSLETTER

Friday 22nd May 2026, Issue 28

Weekly News & Updates

Monday:

Guitar Lessons

Wednesday:

Singing Lessons/Ukulele

Please see at the end of the newsletter links for parent workshops about support for children and families with Autism and ADHD.

Ice pops will be on sale Mondays, Wednesdays and Friday at break and after school.

Ice pop 50p
Ice lollies £1

Please follow us on Facebook for our weekly pictures.

Summer 1 clubs. W/C 01/06/26.

Monday:

-

Tuesday:

- Gardening/Eco Club 12.30.
- YRS1-3 Summer Games 3.30-4.30

Wednesday:

- Ambassadors Club 12.45

Thursday:

- YRS 4-6 Summer Sports 3.30-4.30

Friday:

- Wellbeing club
- Choir
- Friends Non-Uniform Day

Golden Book Stars of the week.

Nursery

Alfie, Alice

Reception

Landon, Freddie, Theo

Ash

Musa, Roman,

Cedar

Carter, Minal, Hugo,

Elm

Cora, Aurora, Harrison,

Larch

Jacob S, George S,

Maple

Theo, Ollie, Casper, Esme,

Oak

Dexter T, Zach, Bobby

Mrs James

Atlehang.

Class attendance this week:

- Reception 89%
- Ash 99%
- Cedar 89%
- Elm 95%
- Larch 96%
- Maple 97%
- Oak 98%

This week's home reading champion:

Ash 100%

House Points

Howarth— 577

Wood - 694

Peel - 714

Kay - 746

You are now able to book before & after school club sessions via School Money for the week commencing 1st June & 8th June.

Please remember to pre book your sessions on School Money. Please remain with your children in the morning until the club door opens at 7.45, this is for your children's safety. Club is open to all children from Nursery to Year 6.



Summer 1 Class Reminders

Seedlings Class:

- Please can you send in a spare pair of wellies to leave under their peg.
- P.E is on a Thursday
- Please provide your child with a sun hat and suncream on sunny days now we are having nice weather.
- Please can all Nursery Rhyme packs be returned to school.
- Your child will now be bringing home a story sack every Thursday.

Saplings Class:

- PE - Tuesday - PE kit needed.
- Sharing books will be changed on a Tuesday.
- Reading books changed on a Friday.

Ash Class

- Reading books will be changed every Friday. Please ensure reading records are signed.
- Spelling tests will take place each Friday.
- Our PE day is Tuesday.
- Don't forget to log in to Seesaw and see what your child has been up to at school-Please let Miss Founde know if you need a new login.

Cedar Class:

- Reading books and signed reading records need returning every Monday.
- New spelling letters have gone home. Copies are available on the class page.
- Please keep books in book bags every day so we can read with your child.
- Spring newsletter is on our class page on the website.
- If parents/grandparents have any toys from their childhood please could they be sent into school after half term to support our new history topic for us to look at?

Elm Class:

- Weekly Homework is set and due on Wednesdays. Please see Seesaw and the Elm Class Page of the website for the weekly tasks.
- Reading books are swapped each Friday.
- P.E days are Tuesdays and Fridays, please ensure all children with long hair have a bobble.
- Spelling letters have been sent home. Please ask Mrs. Hudson if you need a spare!

Larch Class:

- PE Monday and Thursday
- Reading Records due in on Monday
- Homework due in on Monday.
- Spelling test on Friday.

Maple Class:

- PE days are Monday and Thursday
- Spelling tests are on Fridays
- Reading books and Reading Records returned to school for changing on Fridays

Oak Class:

- Weekly homework, which will consist of a math's sheet, grammar sheet and a reading comprehension, will be sent home Mondays to be returned for the following Monday.
- If your child wishes to get a library book then changing days will be now be Monday.
- PE days are Wednesday and Thursday.



Christ Church
CE Primary School

Growing and Learning Together in Christ

Head of School: [Mrs K. James](#)

Diary Dates

Monday 1st June— school reopens

Friday 5th June—Friends Non-Uniform 'gifts for gents'.

Year 4 W/C 8th June—Multiplication check

Year 1 W/C 8th June—Phonics check

Year 6 10-12th June — Robinwood Residential

Year 6 Monday 15th June—School nurse in class—puberty talk

Year 2 Wednesday 17th June — Trip to Towneley.

Wednesday 17th June— Class Photo Day

Friday 19th June—1-4 PM Wellbeing Café and little shop for big hero's.

Year 4 - Year 6— Monday 22nd June Sports Day 1.30-3.30

Year 6 Wednesday 24th June—Elton High School transition day.

Thursday 25th June—Mock trial finals (Selected pupils chosen from Year 6)

Thursday 25th June—New reception parents intake.

Tuesday 30th June — Sycamore Trust Concert at Bury Parish Church 1-3 pm.

Wednesday 1st July — Ukulele Summer Concert 2.30 pm

Year 6 Thursday 2nd July — Leavers' Service at Manchester Cathedral 9 am

Friday 3rd July—non-uniform £1

Year 6 Tuesday 7th July and Wednesday 8th July—Tottington High School transition day.

Diary Dates

Year 1- Year 3 Wednesday 8th July— Sports Day 1.45-3 PM .

EYFS Thursday 9th July- Sports Day 1.45—3.15 PM (Including stay and play)

Year 6 Thursday 9th July—Non-Uniform Day

Friday 10th July—Family colour run Non-Uniform (white for colour run)

Year 6 Friday 10th July— treat day to treetops.

Friday 10th July — End-of-Year Reports Sent Home

Monday 13th July — Parents' Evening Drop-In Sessions

Year 6 Monday 13th July—End of year production—6.30 pm

Year 6 Wednesday 15 July—End of year production—2 pm

Year 6 Friday 17th July—Christ Church leavers service 9.30 AM.

Friday 17th July — School Breaks Up for Summer at 2PM.

Wednesday 2nd September 2026—School reopens

JOIN US FOR A

NON-UNIFORM DAY

ON THE 5TH JUNE

Gifts for Gents!

Instead of wearing uniform, we're asking students to bring a small gift or donation suitable for men (such as toiletries, socks, chocolates, or other thoughtful items) to help support our upcoming event

'Little Gifts for Big Heroes'



THANK YOU FOR YOUR SUPPORT! ♥

FRIENDS OF



CHRIST CHURCH

WALSHAW PTFA



THE FRIENDS OF CHRIST CHURCH

NEWSLETTER

DOUGHNUT FORGET!



Final reminder that Krispy Kreme Original Glazed doughnuts will be on sale today (22nd May) from 3.25pm in the school car park.
Pay by cash or card.
Tuck shop also available.
Thank you to our tuck shop helpers below!



DATES FOR YOUR DIARY

**Friday 5th June
Non-uniform Day**
Instead of wearing uniform, we're asking children to bring in a small gift or donation suitable for men such as toiletries, socks, chocolates or other thoughtful items. This will support our "Little Gifts for Big Heroes" event.

**Friday 19th June, 1-4pm
Little Gifts for Big Heroes**

In collaboration with The Wellbeing Warriors, we'll have gifts for sale for children to purchase for their Big Heroes. More details to follow.

**Friday 26th June
Year 6 Non-uniform Day**
A special treat for our 2026 leavers, with £1 donations supporting their last Summer Fair at Christ Church.

**Friday 3rd July
Non-uniform Day**
Children can support our upcoming Summer Fair event with a £1 donation.

**Friday 10th July, 3.45pm
Summer Fair Event**
Details of this event will be in next month's newsletter so look out for that.

We look forward to seeing you all at these events. Thank you for your continued support.

CAN YOU MAKE A DIFFERENCE?

Friends are looking for volunteers to join us as we step into this promising new chapter.

If you would like to play a direct role in shaping an exciting and engaging school environment for our children, email friendsccw1862@gmail.com to express your interest.



BURY
GRAMMAR SCHOOL

For pupils starting Senior School in September 2027

SENIOR SCHOOL
EXPERIENCE DAY
FOR YEAR 5 PUPILS
Tuesday 2nd June 2026



For more information or to reserve your place,
please scan the QR code



WWW.BURYGRAMMAR.COM |   

**We are excited to present to you
Starting 21st April 2026**

Bury Neuro Hub



**Tailored support for families of
children / young people with Neurodiverse needs
(with or without a diagnosis)**

**This service is for parent/carers who would like support
and advice around their neurodiverse needs. Your
young person does not have to have a diagnosis to
access this service.**

Drop-in sessions are every

Tuesday & Thursday

9.30am – 3pm

**You can drop in or bookable appointments are
available on request if you prefer.**

Tel: 0161 762 1440

Email: jburns@buryneurohub.co.uk

Address: Phoenix House, 100 Brierley Street, Bury BL9 9HN

The Bury Neuro Hub Offer



Parent/Carers attend a Hub Drop In or Contact the Hub

Invitation to Neuro Hub Appointment offered.

- ✦ In person at the Hub
- ✦ Online
- ✦ Phone calls
- ✦ At school or college

Timely appointment given to discuss and to assess need and match with the correct support at the right time

Needs are Triaged -Signposted to support immediately.

- ★ Triaged as **Green = Getting Advice**
- ★ Triaged as **Amber = Getting Help**
- ★ Triaged as **Red = Getting More Help or Risk Support**

Families will all have access to the Getting advice stage whilst waiting for interventions. Families may also move through the quadrants where required.

Getting Advice

Signpost to relevant seminars held monthly (examples)
Autism and Anxiety –CAMHS * Sensory Processing – Rehabilitation for Independence * Emotional Dysregulation and Building Resilience – CAMHS * The Proud Trust * SENDIASS

Coffee Meetings- Offering a safe environment for families to meet and have a chat with others in the same situation. (Examples)

- Thinking Families
- Post Diagnostic
- Financial support

Information and Resources

- First Point Website / Social Media / Bury's Local Offer
- Advice on SEND and reasonable adjustments
- Social opportunities - local groups/ sessions for all members of the family.
- Local and National support groups for parents accessing universal services.
- Padlet's on various topics

Thriving in Bury for Children and Young People, Parents and Carers, Education, Professionals, Sensory Padlet, Neurodiversity Padlet Autism and ADHD

- "Can Do Approach" Speech and Language WhatsApp group
- Signpost parents / carers and professionals to the Bury Multi-agency Sensory Processing Needs Toolkit on the local offer

Peer to Peer Support

- Parent/carers and young people accessing support from peers when needed.

Getting Help

- **Navigator 1-1 support** for 4-6 weeks support
- **Access to IBASIS and SACS-r** age 12 to 24 months
- **Access to PACT** age 2-10-year-old
- Paediatric Autism Communication Therapy an evidence-based intervention that works through video feedback techniques
- Access to **Post Diagnostic Courses ADHD and Autism**
- **Financial Support with DLA, PIP and Charity Forms**
- **Onward referral** Where needed referrals into services will be actioned to gain the correct support for the family's level of need

Getting More Help

Thinking Families - This is a 6-week course –

The group intervention aims to support carers to understand their child's relational and attachment needs, in order to develop different strategies and ideas for supporting their children in a way that increases their sense of security and well-being and improve their behaviour. delivered by Bury CAMHS, in partnership with First Point

Riding the Rapids 10 weeks training course

Courses will be running in separate age groups

- ✓ Early Years
- ✓ Primary age children
- ✓ Secondary age children

Available to parent/carers of children/young people with a diagnosis of Autism, are on the waiting list for a diagnosis. It is also for parent/ carers of children/ young people with significant learning/ intellectual disabilities.

Getting Risk Support

This person will be there for emotional support for the families in line with Care Plan approach, attending and supporting at meetings where necessary.
As required collaborative support (systemic practice)

What a line-up...

**EDSTART
CLUBS**

Venues

Bury Grammar School

Clifford Billings Sports Complex, BL9 0HN

St Mary's Prestwich

Rectory Lane, M25 1BP

Higher Lane Primary

Egerton Street, M45 7EX

All staff are:
DBS checked
First Aid and
Safeguarding
Qualified

For more information, please
email bury@edstart.org.uk

Press the venue
to book

Book at edstart.org.uk

Follow @edstartsports



MAY **2026**

HALF TERM HOLIDAY CLUB!



**RADCLIFFE PRIMARY SCHOOL,
CORONATION RD, RADCLIFFE, M26 3RD**



TUES 26TH – FRI 29TH MAY 2026

Book Your Childs Place Online Today:

 www.qualitysport.co.uk  | 




**BOOK
ONLINE
TODAY!**

Why Choose us as your childcare provider?

 Over 20 years of experience in the childcare sector

 All of our coaches are enhanced DBS checked, hold relevant safeguarding certification and are paediatric first aid trained.

 Convenient online booking system where parents can book 24/7 and pay by card or childcare vouchers (including tax free childcare).





Autism
Central

NHS

For more information visit
www.autismcentral.nhs.uk



Delivered by
Anna Freud

Session guidance

How to register and join online Autism Central sessions - England's Peer Education Programme | Autism Central

1. Go to the [Autism Central events page](#) or use this monthly learning timetable to find a session/sessions you would like to attend.
2. Navigate the webpage to find a session or sessions you would like to attend, you can use filters to filter by different session types.

Alternatively, you can use this learning timetable to go to the webpage of a session by clicking "link".

3. Once you find a session to attend, click "book now".
4. You'll be prompted to provide your details and create an account (optional).
5. A member of our team will send you a Zoom registration link on the day of the session.

Please note – once registered via the Zoom registration link you will receive from a member of our team, you will receive an automated email from Zoom containing the actual link to follow to join the Zoom meeting.

For any help on joining or enquires, please email: neurodiversity@annafreud.org

In Conversation and Masterclass Sessions

Masterclass series: Supporting autistic people with profound and multiple learning disabilities (PMLD) with Dr Jo Grace

Date	Time	Session title	Booking link
Monday, 11 May	10:30-11:30	Session one - The value of sensory engagement	Link to book all sessions
Monday, 11 May	10:30-11:30	Session two - Choosing sensory experiences	Link to book all sessions

Masterclass series: Supporting Autistic/AuDHD Students In School with Pete Wharmby (Re-run)

Date	Time	Session title	Booking link
Friday, 1 May	16:00-17:30	Session four - Understanding monotropism	Link to book all sessions
Friday, 8 May	16:00-17:30	Session five - School induced emotional burden	Link to book all sessions
Friday, 18 May	16:00-17:30	Session six - Understanding ADHD and AuDHD	Link to book all sessions

In Conversation and Masterclass Sessions

In conversation			
Date	Time	Session title	Booking link
Friday, 8 May	12:00-13:00	Interests as an opportunity for autistic joy with Dr Amy Pearson	Link
Friday, 22 May	12:00-13:00	Friendships and relationships in autistic young people with Dr Felicity Sedgewick	Link
Friday, 5 June	12:00-13:00	What a "good life" might look like for autistic people with a learning disability with Stephen Unwin	Link
Friday, 26 June	12:00-13:00	Beyond behaviour... respecting your child's monotropic flow with Alexis Quinn	Link
Friday, 26 June	12:00-13:00	Autistic people's experiences of emergency departments: what families need to know with Ben Potts	Link
Friday, 17 July	12:00-13:00	Understanding autistic young people's experiences of mainstream primary schools with Jo Billington	Link

Reflective Sessions

Emotion regulation and relationships			
Date	Time	Session title	Booking link
Tuesday, 5 May	10:30-11:30	Supporting emotional regulation in everyday life	Link
Tuesday, 5 May	13:30-14:30	Supporting emotional regulation in everyday life	Link
Tuesday, 5 May	16:00-17:00	Supporting emotional regulation in everyday life	Link
Tuesday, 5 May	20:00-21:00	Supporting emotional regulation in everyday life	Link
Tuesday, 12 May	13:30-14:30	The role of predictability and routines in reducing stress	Link
Tuesday, 12 May	16:00-17:00	The role of predictability and routines in reducing stress	Link
Tuesday, 12 May	20:00-21:00	The role of predictability and routines in reducing stress	Link
Wednesday, 13 May	17:30-18:30	Helping children name and navigate feelings	Link
Tuesday, 19 May	10:30-11:30	Helping children name and navigate feelings	Link
Tuesday, 19 May	13:30-14:30	Helping children name and navigate feelings	Link
Tuesday, 26 May	13:30-14:30	Helping children name and navigate feelings	Link
Tuesday, 26 May	16:00-17:00	Helping children name and navigate feelings	Link

Reflective Sessions

Series: Parenting and family dynamics

Date	Time	Session title	Booking link
Thursday, 7 May	10:30-11:30	Parenting Under Pressure: Recognising Burnout Early	Link
Thursday, 7 May	13:30-14:30	Parenting Under Pressure: Recognising Burnout Early	Link
Thursday, 7 May	16:00-17:00	Parenting Under Pressure: Recognising Burnout Early	Link
Thursday, 14 May	10:30-11:30	Siblings: Supporting Relationships & Managing Rivalry	Link
Thursday, 14 May	13:30-14:30	Siblings: Supporting Relationships & Managing Rivalry	Link
Thursday, 14 May	16:00-17:00	Siblings: Supporting Relationships & Managing Rivalry	Link
Thursday, 21 May	13:30-14:30	Siblings: Supporting Relationships & Managing Rivalry	Link
Thursday, 28 May	10:30-11:30	Family Resilience: Building Strengths Together	Link
Thursday, 28 May	13:30-14:30	Family Resilience: Building Strengths Together	Link
Thursday, 28 May	16:00-17:00	Family Resilience: Building Strengths Together	Link

Reflective Sessions

Series: Mental health and wellbeing

Date	Time	Session title	Booking link
Thursday, 7 May	10:30-11:30	Spotting Early Signs of Mental Health Struggles	Link
Thursday, 7 May	12:00-13:00	Spotting Early Signs of Mental Health Struggles	Link
Thursday, 14 May	10:30-11:30	Self-Harm & Suicidal Thoughts: What Parents Need to Know	Link
Thursday, 14 May	12:00-13:00	Self-Harm & Suicidal Thoughts: What Parents Need to Know	Link
Thursday, 21 May	10:30-11:30	Sleep & Its Impact on Mood and Behaviour	Link
Thursday, 21 May	12:00-13:00	Sleep & Its Impact on Mood and Behaviour	Link
Thursday, 28 May	10:30-11:30	Preventing escalations at home: practical strategies	Link
Thursday, 28 May	12:00-13:00	Preventing escalations at home: practical strategies	Link

Series: Supporting LGBTQIA+ autistic family members to live healthy, happy lives

Date	Time	Session title	Booking link
Monday, 10 May	10:00-11:00	Relationships and chosen family	Link
Monday, 10 May	13:30-14:30	Relationships and chosen family	Link

Reflective Sessions

Series: Play in childhood: Neurodivergent-affirming play & how to support it			
Date	Time	Session title	Booking link
Tuesday, 5 May	12:00-13:00	Rethinking play through a neurodivergent lens	Link
Tuesday, 5 May	17:30-18:30	Rethinking play through a neurodivergent lens	Link
Tuesday, 12 May	12:00-13:00	Why play matters for regulation and connection	Link
Tuesday, 12 May	17:30-18:30	Why play matters for regulation and connection	Link
Wednesday, 13 May	12:00-13:00	Why play matters for regulation and connection	Link
Tuesday, 19 May	12:00-13:00	Following your child's lead	Link
Thursday, 21 May	10:30-11:30	Following your child's lead	Link
Thursday, 21 May	12:00-13:00	Following your child's lead	Link
Tuesday, 26 May	12:00-13:00	Following your child's lead	Link
Tuesday, 26 May	17:30-18:30	Following your child's lead	Link

Reflective Sessions

Series: School, learning and community

Date	Time	Session title	Booking link
Wednesday, 6 May	12:00-13:00	Navigating the education system: Advocacy skills for parents	Link
Wednesday, 6 May	13:30-14:30	Navigating the education system: Advocacy skills for parents	Link
Wednesday, 13 May	12:00-13:00	Reducing School-Related Anxiety	Link
Wednesday, 13 May	16:00-17:00	Reducing School-Related Anxiety	Link
Wednesday, 20 May	12:00-13:00	Homework, Motivation & Executive Functioning	Link
Wednesday, 20 May	13:30-14:30	Homework, Motivation & Executive Functioning	Link
Wednesday, 27 May	12:00-13:00	Building Bridges Between Home and School	Link
Wednesday, 27 May	13:30-14:30	Building Bridges Between Home and School	Link
Wednesday, 27 May	16:00-17:00	Building Bridges Between Home and School	Link

Reflective Sessions

Foundations of understanding			
Date	Time	Session title	Booking link
Wednesday, 6 May	10:30-11:30	Understanding autism beyond stereotypes	Link
Wednesday, 6 May	20:00-21:00	Understanding autism beyond stereotypes	Link
Tuesday, 12 May	10:30-11:30	ADHD Across the Lifespan: Myths & Realities	Link
Wednesday, 13 May	10:30-11:30	ADHD Across the Lifespan: Myths & Realities	Link
Wednesday, 13 May	13:30-14:30	ADHD Across the Lifespan: Myths & Realities	Link
Wednesday, 13 May	20:00-21:00	ADHD Across the Lifespan: Myths & Realities	Link
Thursday, 14 May	13:30-14:30	Learning disability and strengths-based perspectives	Link
Wednesday, 20 May	10:30-11:30	Learning disability and strengths-based perspectives	Link
Wednesday, 20 May	20:00-21:00	Learning disability and strengths-based perspectives	Link
Wednesday, 27 May	10:30-11:30	Co-occurring Conditions: Anxiety, Depression, and More	Link
Wednesday, 27 May	12:00-13:00	Co-occurring Conditions: Anxiety, Depression, and More	Link
Wednesday, 27 May	20:00-21:00	Co-occurring Conditions: Anxiety, Depression, and More	Link

Educational Family Guide Sessions

Series: Self-harm, suicidality, and acute crisis			
Date	Time	Session title	Booking link
Tuesday, 5 May	12:00-13:00	Spotting warning signs in young people	Link
Tuesday, 5 May	20:00-21:00	Spotting warning signs in young people	Link
Tuesday, 12 May	10:30-11:30	Immediate support and safety strategies	Link
Tuesday, 12 May	20:00-21:00	Immediate support and safety strategies	Link
Tuesday, 26 May	10:30-11:30	Accessing professional and peer support	Link
Tuesday, 26 May	20:00-21:00	Accessing professional and peer support	Link

Series: Burnout and Family Mental Health			
Date	Time	Session title	Booking link
Wednesday, 6 May	10:30-11:30	Recognising autistic/ADHD burnout	Link
Wednesday, 6 May	17:30-18:30	Recognising autistic/ADHD burnout	Link
Wednesday, 13 May	10:30-11:30	Family-level stress and compassion fatigue	Link
Wednesday, 13 May	17:30-18:30	Family-level stress and compassion fatigue	Link
Wednesday, 27 May	10:30-11:30	Coping strategies for carers and siblings	Link
Wednesday, 27 May	17:30-18:30	Coping strategies for carers and siblings	Link

Educational Family Guide Sessions

Series: AuDHD Experiences: What Works			
Date	Time	Session title	Booking link
Thursday, 7 May	12:00-13:00	Navigating executive functioning and sensory needs	Link
Thursday, 7 May	17:30-18:30	Navigating executive functioning and sensory needs	Link
Thursday, 14 May	12:00-13:00	Emotional regulation and rejection sensitivity	Link
Thursday, 14 May	17:30-18:30	Emotional regulation and rejection sensitivity	Link
Thursday, 28 May	12:00-13:00	School, work, and social life with AuDHD	Link
Thursday, 28 May	17:30-18:30	School, work, and social life with AuDHD	Link

Virtual Meet-up

Grandparents' virtual meet-up - Autism & family life

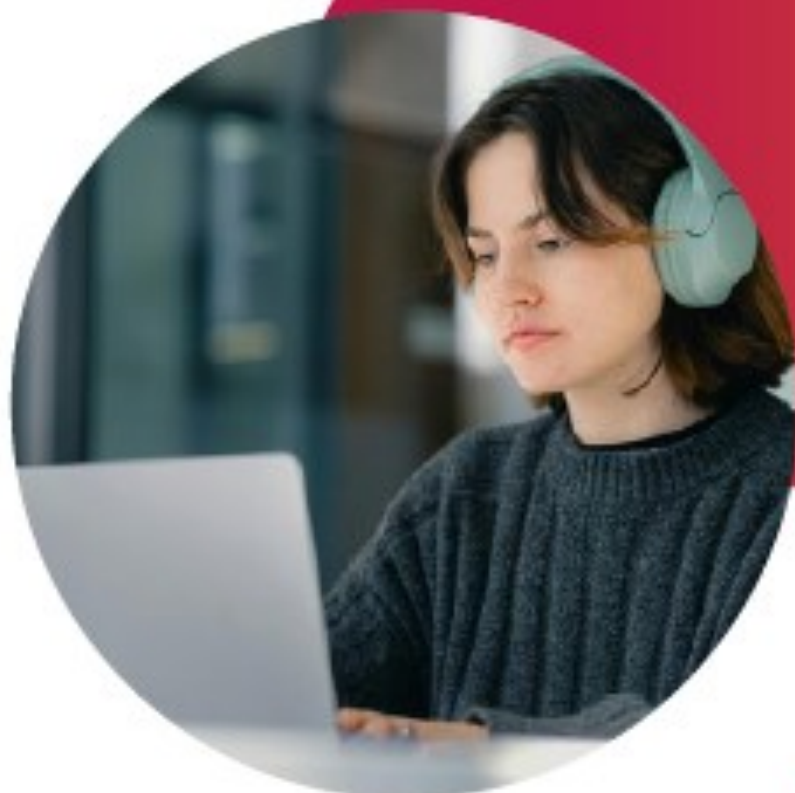
Date	Time	Session type	Booking link
Thursday, 7 May	20:00-21:00	Virtual meet-up for families considering/waiting for assessment	Link
Thursday, 14 May	20:00-21:00	Virtual meet-up for families considering/waiting for assessment	Link
Thursday, 28 May	20:00-21:00	Virtual meet-up: You've received an autism diagnosis in the family - now what?	Link



Autism
Central



For more information visit
www.autismcentral.nhs.uk



Delivered by
Anna Freud