



# CHRIST CHURCH NEWSLETTER

Friday 15th May 2026, Issue 27

## Weekly News & Updates

### Monday:

Guitar Lessons

### Wednesday:

Singing Lessons/Ukulele



Please see at the end of the newsletter links for parent workshops about support for children and families with Autism and ADHD.



Unfortunately, we had to make the decision to cancel Sports Day this week due to the weather. We will re-schedule for after half term when the weather looks a little more promising. New date to be confirmed.



A huge well done to **Y6** for their brilliant effort and attitude during SATs this week. They gave it their all, and we couldn't be prouder.



Please follow us on Facebook for our weekly pictures.

## Summer 1 clubs. W/C 18/05/26.

### Monday:

-

### Tuesday:

- Gardening/Eco Club 12.30.
- YRS 4-6 Cricket Sports Club 3.30-4.30

### Wednesday:

- Ambassadors Club 12.45

### Thursday:

- YRS 1-3 Olympic Games Sports Club 3.30-4.30

### Friday:

- Wellbeing club
- Choir

## Golden Book Stars of the week.

### Nursery

*Athena, Matthew*

### Reception

*Roman, Ebonie*

### Ash

*Ellie, Isla,*

### Cedar

*Alex, Imogen, Ethan,*

### Elm

*Imogen, Zayden,*

### Larch

*Zachary, Aidhan*

### Maple

*All of Year 5.*

### Oak

*All of Year 6.*

### Mrs James

*Aleah Hope*

## Class attendance this week:

- Reception 93%
- Ash 99%
- Cedar 92%
- Elm 93%
- Larch 96%
- Maple 99%
- Oak 99%

## This week's home reading champion:

**Elm 95%**

## House Points

**Howarth— 654**

**Wood - 628**

**Peel - 583**

**Kay - 500**

You are now able to book before & after school club sessions via School Money for the week commencing 18th May & 1st June.

Please remember to pre book your sessions on School Money. Please remain with your children in the morning until the club door opens at 7.45, this is for your children's safety. Club is open to all children from Nursery to Year 6.



# Summer 1 Class Reminders

## Seedlings Class:

- Please can you send in a spare pair of wellies to leave under their peg.
- P.E is on a Thursday
- Please provide your child with a sun hat and suncream on sunny days now we are having nice weather.
- Please can all Nursery Rhyme packs be returned to school.
- Your child will now be bringing home a story sack every Thursday.

## Saplings Class:

- PE - Tuesday - PE kit needed.
- Sharing books will be changed on a Tuesday.
- Reading books changed on a Friday.

## Ash Class

- Reading books will be changed every Friday. Please ensure reading records are signed.
- Spelling tests will take place each Friday.
- Our PE day is Tuesday.
- Don't forget to log in to Seesaw and see what your child has been up to at school-Please let Miss Founde know if you need a new login.
- We will visit the library on Monday 20<sup>th</sup> April, Friday 1<sup>st</sup> May and Monday 18<sup>th</sup> May.

## Cedar Class:

- Reading books and signed reading records need returning every Monday.
- New spelling letters have gone home. Copies are available on the class page.
- Please keep books in book bags every day so we can read with your child.
- Spring newsletter is on our class page on the website.

## Elm Class:

- Weekly Homework is set and due on Wednesdays. Please see Seesaw and the Elm Class Page of the website for the weekly tasks.
- Reading books are swapped each Friday.
- P.E days are Tuesdays and Fridays, please ensure all children with long hair have a bobble.
- We visit the school library on alternate Thursdays: 23.4.26, 6.5.26, 21.5.26
- Spelling letters have been sent home. Please ask Mrs. Hudson if you need a spare!

## Larch Class:

- PE Monday and Thursday
- Reading Records due in on Monday
- Homework due in on Monday.
- Spelling test on Friday.
- Tuesday 9th and Wednesday 10th June- Multiplication Check.

## Maple Class:

- PE days are Monday and Thursday
- Spelling tests are on Fridays
- Reading books and Reading Records returned to school for changing on Fridays

## Oak Class:

- Weekly homework, which will consist of a math's sheet, grammar sheet and a reading comprehension, will be sent home Mondays to be returned for the following Monday.
- If your child wishes to get a library book then changing days will be now be Monday.
- PE days are Wednesday and Thursday.



Christ Church  
CE Primary School

Growing and Learning Together in Christ

Head of School: [Mrs K. James](#)

## Diary Dates

Thursday 21st May – FSU Sports Day 2pm

Friday 22nd May – school closes for Haf-Term

Monday 1st June – school reopens

10-12th June – Robinwood Y6 Residential

Wednesday 17th June – Year 2 Trip to Towneley/Hall. Class Photo Day

Monday 22nd June – EYFS trip to Imagine That

Wednesday 24th June – Year 5 trip to Manchester Museum

Tuesday 30th June – Sycamore Trust Concert at Bury Parish Church 1-3 pm.

Wednesday 1st July – Ukulele Summer Concert 2.30 pm

Thursday 2nd July – Year 6 Leavers' Service at Manchester Cathedral 9 am

Friday 10th July – Year 6 treat day to Heaton Park

Friday 10th July – End-of-Year Reports Sent Home

Monday 13th July – Parents' Evening Drop-In Sessions

Friday 17th July – School Breaks Up for Summer at 2PM.

Date TBC – Year 6 Leavers' Service at Christ Church

Date TBC – Year 6 Production



A huge well done to **Y6** for their brilliant effort and attitude during SATs this week. They gave it their all, and we couldn't be prouder.





# DOUGHNUT SALE

**Hello from the NEW PTFA committee...**

We're excited to introduce ourselves with a yummy after-school treat!



**ALL DOUGHNUTS ARE KRISPY KREME ORIGINAL GLAZED**


Single doughnut - £1.50

Box of 12 doughnuts - £14 (pre-order only)

**FRIDAY 22<sup>ND</sup> MAY  
FROM 3.25PM ONWARDS  
SCHOOL CAR PARK**

Just in time for the Bank Holiday weekend...  
Getting together with family?  
Treat them (and you!) to a box of 12 delicious doughnuts!

## **PRE-ORDER DETAILS**

 Friday 8<sup>th</sup> May - Friday 15<sup>th</sup> May

Order via School Money

Collect after school on 22<sup>nd</sup> May

## **PLUS, ON THE DAY...**

- **A Tuck Shop** for the kids
- £ Card and cash accepted

**Thank you for supporting our school...  
one doughnut at a time!**



Krispy Kreme Original Glazed Doughnuts contain gluten and eggs, and may contain nut traces.

For an allergy-friendly alternative, contact Friends on [friendsccw1862@gmail.com](mailto:friendsccw1862@gmail.com)





BURY  
GRAMMAR SCHOOL

For pupils starting Senior School in September 2027

SENIOR SCHOOL  
EXPERIENCE DAY  
FOR YEAR 5 PUPILS  
Tuesday 2nd June 2026



For more information or to reserve your place,  
please scan the QR code



WWW.BURYGRAMMAR.COM |   

**We are excited to present to you  
Starting 21st April 2026**

## **Bury Neuro Hub**



**Tailored support for families of  
children / young people with Neurodiverse needs  
(with or without a diagnosis)**

**This service is for parent/carers who would like support  
and advice around their neurodiverse needs. Your  
young person does not have to have a diagnosis to  
access this service.**

**Drop-in sessions are every**

**Tuesday & Thursday**

**9.30am – 3pm**

**You can drop in or bookable appointments are  
available on request if you prefer.**

**Tel: 0161 762 1440**

**Email: [jburns@buryneurohub.co.uk](mailto:jburns@buryneurohub.co.uk)**

**Address: Phoenix House, 100 Brierley Street, Bury BL9 9HN**

# The Bury Neuro Hub Offer



## Parent/Carers attend a Hub Drop In or Contact the Hub

Invitation to Neuro Hub Appointment offered.

- ✦ In person at the Hub
- ✦ Online
- ✦ Phone calls
- ✦ At school or college

Timely appointment given to discuss and to assess need and match with the correct support at the right time

## Needs are Triaged -Signposted to support immediately.

- ★ Triaged as **Green = Getting Advice**
- ★ Triaged as **Amber = Getting Help**
- ★ Triaged as **Red = Getting More Help or Risk Support**

Families will all have access to the Getting advice stage whilst waiting for interventions. Families may also move through the quadrants where required.

## Getting Advice

Signpost to relevant seminars held monthly (examples)  
Autism and Anxiety –CAMHS \* Sensory Processing – Rehabilitation for Independence \* Emotional Dysregulation and Building Resilience – CAMHS \* The Proud Trust \* SENDIASS

**Coffee Meetings-** Offering a safe environment for families to meet and have a chat with others in the same situation. (Examples)

- Thinking Families
- Post Diagnostic
- Financial support

### Information and Resources

- First Point Website / Social Media / Bury's Local Offer
- Advice on SEND and reasonable adjustments
- Social opportunities - local groups/ sessions for all members of the family.
- Local and National support groups for parents accessing universal services.
- Padlet's on various topics

**Thriving in Bury** for Children and Young People, Parents and Carers, Education, Professionals, Sensory Padlet, Neurodiversity Padlet Autism and ADHD

- "Can Do Approach" Speech and Language WhatsApp group
- Signpost parents / carers and professionals to the Bury Multi-agency Sensory Processing Needs Toolkit on the local offer

### Peer to Peer Support

- Parent/carers and young people accessing support from peers when needed.

## Getting Help

- **Navigator 1-1 support** for 4-6 weeks support
- **Access to IBASIS and SACS-r** age 12 to 24 months
- **Access to PACT** age 2-10-year-old
- Paediatric Autism Communication Therapy an evidence-based intervention that works through video feedback techniques
- Access to **Post Diagnostic Courses ADHD and Autism**
- **Financial Support with DLA, PIP and Charity Forms**
- **Onward referral** Where needed referrals into services will be actioned to gain the correct support for the family's level of need

## Getting More Help

### Thinking Families - This is a 6-week course –

The group intervention aims to support carers to understand their child's relational and attachment needs, in order to develop different strategies and ideas for supporting their children in a way that increases their sense of security and well-being and improve their behaviour. delivered by Bury CAMHS, in partnership with First Point

### Riding the Rapids 10 weeks training course

Courses will be running in separate age groups

- ✓ Early Years
- ✓ Primary age children
- ✓ Secondary age children

Available to parent/carers of children/young people with a diagnosis of Autism, are on the waiting list for a diagnosis. It is also for parent/ carers of children/ young people with significant learning/ intellectual disabilities.

## Getting Risk Support

This person will be there for emotional support for the families in line with Care Plan approach, attending and supporting at meetings where necessary.  
As required collaborative support (systemic practice)

# What a line-up...

**EDSTART  
CLUBS**

## Venues

### **Bury Grammar School**

**Clifford Billings Sports Complex, BL9 0HN**

### **St Mary's Prestwich**

**Rectory Lane, M25 1BP**

### **Higher Lane Primary**

**Egerton Street, M45 7EX**

All staff are:  
DBS checked  
First Aid and  
Safeguarding  
Qualified

For more information, please  
email [bury@edstart.org.uk](mailto:bury@edstart.org.uk)

Press the venue  
to book

**Book at [edstart.org.uk](http://edstart.org.uk)**

**Follow @edstartsports**



**MAY** **2026**

# HALF TERM HOLIDAY CLUB!



**RADCLIFFE PRIMARY SCHOOL,  
CORONATION RD, RADCLIFFE, M26 3RD**



**TUES 26TH – FRI 29TH MAY 2026**

**Book Your Childs Place Online Today:**

 [www.qualitysport.co.uk](http://www.qualitysport.co.uk)  | 




**BOOK  
ONLINE  
TODAY!**

**Why Choose us as your childcare provider?**

 Over 20 years of experience in the childcare sector

 All of our coaches are enhanced DBS checked, hold relevant safeguarding certification and are paediatric first aid trained.

 Convenient online booking system where parents can book 24/7 and pay by card or childcare vouchers (including tax free childcare).





Autism  
Central



For more information visit  
[www.autismcentral.nhs.uk](http://www.autismcentral.nhs.uk)



Delivered by  
**Anna Freud**

# Session guidance

How to register and join online Autism Central sessions - England's Peer Education Programme | Autism Central

1. Go to the [Autism Central events page](#) or use this monthly learning timetable to find a session/sessions you would like to attend.
2. Navigate the webpage to find a session or sessions you would like to attend, you can use filters to filter by different session types.

Alternatively, you can use this learning timetable to go to the webpage of a session by clicking "link".

3. Once you find a session to attend, click "book now".
4. You'll be prompted to provide your details and create an account (optional).
5. A member of our team will send you a Zoom registration link on the day of the session.

Please note – once registered via the Zoom registration link you will receive from a member of our team, you will receive an automated email from Zoom containing the actual link to follow to join the Zoom meeting.

For any help on joining or enquires, please email: [neurodiversity@annafreud.org](mailto:neurodiversity@annafreud.org)

# In Conversation and Masterclass Sessions

## Masterclass series: Supporting autistic people with profound and multiple learning disabilities (PMLD) with Dr Jo Grace

Date	Time	Session title	Booking link
Monday, 11 May	10:30-11:30	Session one - The value of sensory engagement	<a href="#">Link to book all sessions</a>
Monday, 11 May	10:30-11:30	Session two - Choosing sensory experiences	<a href="#">Link to book all sessions</a>

## Masterclass series: Supporting Autistic/AuDHD Students In School with Pete Wharmby (Re-run)

Date	Time	Session title	Booking link
Friday, 1 May	16:00-17:30	Session four - Understanding monotropism	<a href="#">Link to book all sessions</a>
Friday, 8 May	16:00-17:30	Session five - School induced emotional burden	<a href="#">Link to book all sessions</a>
Friday, 18 May	16:00-17:30	Session six - Understanding ADHD and AuDHD	<a href="#">Link to book all sessions</a>

# In Conversation and Masterclass Sessions

In conversation			
Date	Time	Session title	Booking link
Friday, 8 May	12:00-13:00	Interests as an opportunity for autistic joy with Dr Amy Pearson	<a href="#">Link</a>
Friday, 22 May	12:00-13:00	Friendships and relationships in autistic young people with Dr Felicity Sedgewick	<a href="#">Link</a>
Friday, 5 June	12:00-13:00	What a "good life" might look like for autistic people with a learning disability with Stephen Unwin	<a href="#">Link</a>
Friday, 26 June	12:00-13:00	Beyond behaviour... respecting your child's monotropic flow with Alexis Quinn	<a href="#">Link</a>
Friday, 26 June	12:00-13:00	Autistic people's experiences of emergency departments: what families need to know with Ben Potts	<a href="#">Link</a>
Friday, 17 July	12:00-13:00	Understanding autistic young people's experiences of mainstream primary schools with Jo Billington	<a href="#">Link</a>

# Reflective Sessions

Emotion regulation and relationships			
Date	Time	Session title	Booking link
Tuesday, 5 May	10:30-11:30	Supporting emotional regulation in everyday life	<a href="#">Link</a>
Tuesday, 5 May	13:30-14:30	Supporting emotional regulation in everyday life	<a href="#">Link</a>
Tuesday, 5 May	16:00-17:00	Supporting emotional regulation in everyday life	<a href="#">Link</a>
Tuesday, 5 May	20:00-21:00	Supporting emotional regulation in everyday life	<a href="#">Link</a>
Tuesday, 12 May	13:30-14:30	The role of predictability and routines in reducing stress	<a href="#">Link</a>
Tuesday, 12 May	16:00-17:00	The role of predictability and routines in reducing stress	<a href="#">Link</a>
Tuesday, 12 May	20:00-21:00	The role of predictability and routines in reducing stress	<a href="#">Link</a>
Wednesday, 13 May	17:30-18:30	Helping children name and navigate feelings	<a href="#">Link</a>
Tuesday, 19 May	10:30-11:30	Helping children name and navigate feelings	<a href="#">Link</a>
Tuesday, 19 May	13:30-14:30	Helping children name and navigate feelings	<a href="#">Link</a>
Tuesday, 26 May	13:30-14:30	Helping children name and navigate feelings	<a href="#">Link</a>
Tuesday, 26 May	16:00-17:00	Helping children name and navigate feelings	<a href="#">Link</a>

# Reflective Sessions

## Series: Parenting and family dynamics

Date	Time	Session title	Booking link
Thursday, 7 May	10:30-11:30	Parenting Under Pressure: Recognising Burnout Early	<a href="#">Link</a>
Thursday, 7 May	13:30-14:30	Parenting Under Pressure: Recognising Burnout Early	<a href="#">Link</a>
Thursday, 7 May	16:00-17:00	Parenting Under Pressure: Recognising Burnout Early	<a href="#">Link</a>
Thursday, 14 May	10:30-11:30	Siblings: Supporting Relationships & Managing Rivalry	<a href="#">Link</a>
Thursday, 14 May	13:30-14:30	Siblings: Supporting Relationships & Managing Rivalry	<a href="#">Link</a>
Thursday, 14 May	16:00-17:00	Siblings: Supporting Relationships & Managing Rivalry	<a href="#">Link</a>
Thursday, 21 May	13:30-14:30	Siblings: Supporting Relationships & Managing Rivalry	<a href="#">Link</a>
Thursday, 28 May	10:30-11:30	Family Resilience: Building Strengths Together	<a href="#">Link</a>
Thursday, 28 May	13:30-14:30	Family Resilience: Building Strengths Together	<a href="#">Link</a>
Thursday, 28 May	16:00-17:00	Family Resilience: Building Strengths Together	<a href="#">Link</a>

# Reflective Sessions

## Series: Mental health and wellbeing

Date	Time	Session title	Booking link
Thursday, 7 May	10:30-11:30	Spotting Early Signs of Mental Health Struggles	<a href="#">Link</a>
Thursday, 7 May	12:00-13:00	Spotting Early Signs of Mental Health Struggles	<a href="#">Link</a>
Thursday, 14 May	10:30-11:30	Self-Harm & Suicidal Thoughts: What Parents Need to Know	<a href="#">Link</a>
Thursday, 14 May	12:00-13:00	Self-Harm & Suicidal Thoughts: What Parents Need to Know	<a href="#">Link</a>
Thursday, 21 May	10:30-11:30	Sleep & Its Impact on Mood and Behaviour	<a href="#">Link</a>
Thursday, 21 May	12:00-13:00	Sleep & Its Impact on Mood and Behaviour	<a href="#">Link</a>
Thursday, 28 May	10:30-11:30	Preventing escalations at home: practical strategies	<a href="#">Link</a>
Thursday, 28 May	12:00-13:00	Preventing escalations at home: practical strategies	<a href="#">Link</a>

## Series: Supporting LGBTQIA+ autistic family members to live healthy, happy lives

Date	Time	Session title	Booking link
Monday, 10 May	10:00-11:00	Relationships and chosen family	<a href="#">Link</a>
Monday, 10 May	13:30-14:30	Relationships and chosen family	<a href="#">Link</a>

# Reflective Sessions

Series: Play in childhood: Neurodivergent-affirming play & how to support it			
Date	Time	Session title	Booking link
Tuesday, 5 May	12:00-13:00	Rethinking play through a neurodivergent lens	<a href="#">Link</a>
Tuesday, 5 May	17:30-18:30	Rethinking play through a neurodivergent lens	<a href="#">Link</a>
Tuesday, 12 May	12:00-13:00	Why play matters for regulation and connection	<a href="#">Link</a>
Tuesday, 12 May	17:30-18:30	Why play matters for regulation and connection	<a href="#">Link</a>
Wednesday, 13 May	12:00-13:00	Why play matters for regulation and connection	<a href="#">Link</a>
Tuesday, 19 May	12:00-13:00	Following your child's lead	<a href="#">Link</a>
Thursday, 21 May	10:30-11:30	Following your child's lead	<a href="#">Link</a>
Thursday, 21 May	12:00-13:00	Following your child's lead	<a href="#">Link</a>
Tuesday, 26 May	12:00-13:00	Following your child's lead	<a href="#">Link</a>
Tuesday, 26 May	17:30-18:30	Following your child's lead	<a href="#">Link</a>

# Reflective Sessions

Series: School, learning and community

Date	Time	Session title	Booking link
Wednesday, 6 May	12:00-13:00	Navigating the education system: Advocacy skills for parents	<a href="#">Link</a>
Wednesday, 6 May	13:30-14:30	Navigating the education system: Advocacy skills for parents	<a href="#">Link</a>
Wednesday, 13 May	12:00-13:00	Reducing School-Related Anxiety	<a href="#">Link</a>
Wednesday, 13 May	16:00-17:00	Reducing School-Related Anxiety	<a href="#">Link</a>
Wednesday, 20 May	12:00-13:00	Homework, Motivation & Executive Functioning	<a href="#">Link</a>
Wednesday, 20 May	13:30-14:30	Homework, Motivation & Executive Functioning	<a href="#">Link</a>
Wednesday, 27 May	12:00-13:00	Building Bridges Between Home and School	<a href="#">Link</a>
Wednesday, 27 May	13:30-14:30	Building Bridges Between Home and School	<a href="#">Link</a>
Wednesday, 27 May	16:00-17:00	Building Bridges Between Home and School	<a href="#">Link</a>

# Reflective Sessions

Foundations of understanding			
Date	Time	Session title	Booking link
Wednesday, 6 May	10:30-11:30	Understanding autism beyond stereotypes	<a href="#">Link</a>
Wednesday, 6 May	20:00-21:00	Understanding autism beyond stereotypes	<a href="#">Link</a>
Tuesday, 12 May	10:30-11:30	ADHD Across the Lifespan: Myths & Realities	<a href="#">Link</a>
Wednesday, 13 May	10:30-11:30	ADHD Across the Lifespan: Myths & Realities	<a href="#">Link</a>
Wednesday, 13 May	13:30-14:30	ADHD Across the Lifespan: Myths & Realities	<a href="#">Link</a>
Wednesday, 13 May	20:00-21:00	ADHD Across the Lifespan: Myths & Realities	<a href="#">Link</a>
Thursday, 14 May	13:30-14:30	Learning disability and strengths-based perspectives	<a href="#">Link</a>
Wednesday, 20 May	10:30-11:30	Learning disability and strengths-based perspectives	<a href="#">Link</a>
Wednesday, 20 May	20:00-21:00	Learning disability and strengths-based perspectives	<a href="#">Link</a>
Wednesday, 27 May	10:30-11:30	Co-occurring Conditions: Anxiety, Depression, and More	<a href="#">Link</a>
Wednesday, 27 May	12:00-13:00	Co-occurring Conditions: Anxiety, Depression, and More	<a href="#">Link</a>
Wednesday, 27 May	20:00-21:00	Co-occurring Conditions: Anxiety, Depression, and More	<a href="#">Link</a>

# Educational Family Guide Sessions

Series: Self-harm, suicidality, and acute crisis			
Date	Time	Session title	Booking link
Tuesday, 5 May	12:00-13:00	Spotting warning signs in young people	<a href="#">Link</a>
Tuesday, 5 May	20:00-21:00	Spotting warning signs in young people	<a href="#">Link</a>
Tuesday, 12 May	10:30-11:30	Immediate support and safety strategies	<a href="#">Link</a>
Tuesday, 12 May	20:00-21:00	Immediate support and safety strategies	<a href="#">Link</a>
Tuesday, 26 May	10:30-11:30	Accessing professional and peer support	<a href="#">Link</a>
Tuesday, 26 May	20:00-21:00	Accessing professional and peer support	<a href="#">Link</a>

Series: Burnout and Family Mental Health			
Date	Time	Session title	Booking link
Wednesday, 6 May	10:30-11:30	Recognising autistic/ADHD burnout	<a href="#">Link</a>
Wednesday, 6 May	17:30-18:30	Recognising autistic/ADHD burnout	<a href="#">Link</a>
Wednesday, 13 May	10:30-11:30	Family-level stress and compassion fatigue	<a href="#">Link</a>
Wednesday, 13 May	17:30-18:30	Family-level stress and compassion fatigue	<a href="#">Link</a>
Wednesday, 27 May	10:30-11:30	Coping strategies for carers and siblings	<a href="#">Link</a>
Wednesday, 27 May	17:30-18:30	Coping strategies for carers and siblings	<a href="#">Link</a>

# Educational Family Guide Sessions

Series: AuDHD Experiences: What Works			
Date	Time	Session title	Booking Link
Thursday, 7 May	12:00-13:00	Navigating executive functioning and sensory needs	<a href="#">Link</a>
Thursday, 7 May	17:30-18:30	Navigating executive functioning and sensory needs	<a href="#">Link</a>
Thursday, 14 May	12:00-13:00	Emotional regulation and rejection sensitivity	<a href="#">Link</a>
Thursday, 14 May	17:30-18:30	Emotional regulation and rejection sensitivity	<a href="#">Link</a>
Thursday, 28 May	12:00-13:00	School, work, and social life with AuDHD	<a href="#">Link</a>
Thursday, 28 May	17:30-18:30	School, work, and social life with AuDHD	<a href="#">Link</a>

# Virtual Meet-up

## Grandparents' virtual meet-up - Autism & family life

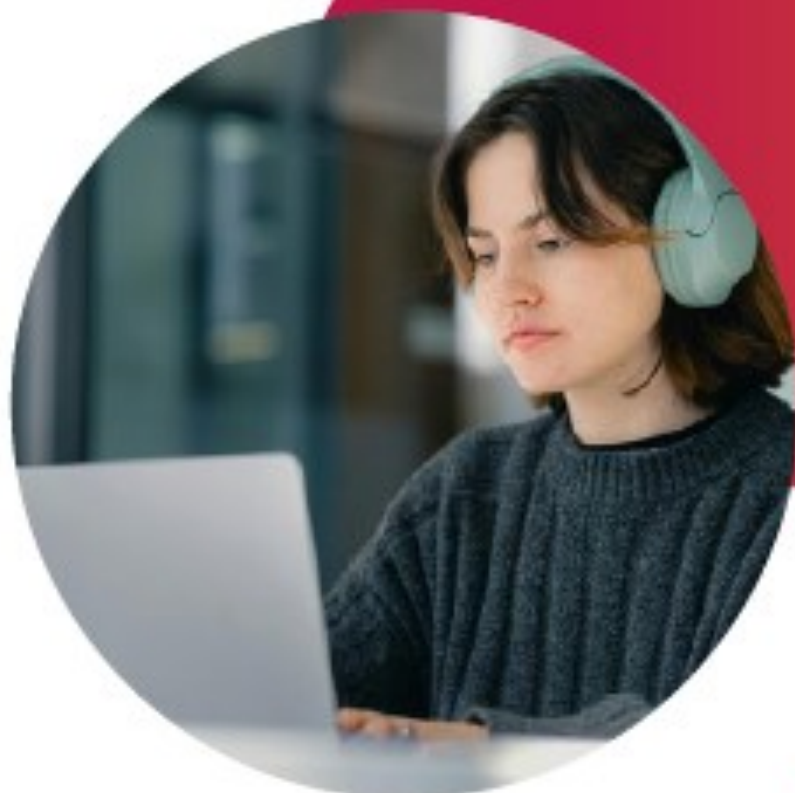
Date	Time	Session type	Booking link
Thursday, 7 May	20:00-21:00	Virtual meet-up for families considering/waiting for assessment	<a href="#">Link</a>
Thursday, 14 May	20:00-21:00	Virtual meet-up for families considering/waiting for assessment	<a href="#">Link</a>
Thursday, 28 May	20:00-21:00	Virtual meet-up: You've received an autism diagnosis in the family - now what?	<a href="#">Link</a>



Autism  
Central



For more information visit  
[www.autismcentral.nhs.uk](http://www.autismcentral.nhs.uk)



Delivered by  
**Anna Freud**