



CHRIST CHURCH NEWSLETTER

Friday 12th June 2026, Issue 30

Weekly News & Updates

Monday:

Guitar Lessons

Wednesday:

Singing Lessons/Ukulele

—

Please see at the end of the newsletter links for parent workshops about support for children and families with Autism and ADHD.

—

Ice pops will be on sale Mondays, Wednesdays and Friday at break and after school.

Ice pop 50p
Ice lollies £1

—

Please support our Wellbeing Warriors with the Wellbeing Cafe on the 19th June. Tickets are on sale now from class.

—

Please follow us on Facebook for our weekly pictures.

Summer 2 clubs. W/C 15/06/26.

Monday:

- YR4 Multiplication check
- YR1 Phonics Check

Tuesday:

- Gardening/Eco Club 12.30.
- YRS1-3 Summer Games 3.30-4.30

Wednesday:

- Ambassadors Club 12.45

Thursday:

- YRS 4-6 Summer Sports 3.30-4.30

Friday:

- Wellbeing club
- Choir

Golden Book Stars of the week.

Nursery

George, Toby

Reception

Phoenix, Louis

Ash

Evie, Lydia,

Cedar

George, Charlie,

Elm

Lilly,

Larch

Oliver,

Maple

Harry, Archie, Alfie, Isla,

Mr Beck

Girls' Football Team

Mrs James

Cora, Nevaeh,

Class attendance this week:

- Reception 97%
- Ash 98%
- Cedar 96%
- Elm 98%
- Larch 96%
- Maple 97%
- Oak 99%

This week's home reading champion:

Maple 97%

House Points

Howarth— 513

Wood - 391

Peel - 386

Kay - 404

You are now able to book before & after school club sessions via School Money for the week commencing 15th June & 22nd June.

Please remember to pre book your sessions on School Money. Please remain with your children in the morning until the club door opens at 7.45, this is for your children's safety. Club is open to all children from Nursery to Year 6.



Summer 2 Class Reminders

Seedlings Class:

- Please can you send in a spare pair of wellies to leave under their peg.
- P.E is on a Thursday
- Please provide your child with a sun hat and suncream on sunny days now we are having nice weather.
- Please can all Nursery Rhyme packs be returned to school.
- Your child will now be bringing home a story sack every Thursday.

Saplings Class:

- PE - Tuesday - PE kit needed.
- Sharing books will be changed on a Tuesday.
- Reading books changed on a Friday.

Ash Class

- Reading books will be changed every Friday. Please ensure reading records are signed.
- Spelling tests will take place each Friday.
- Our PE day is Tuesday.
- Don't forget to log in to Seesaw and see what your child has been up to at school-Please let Miss Founde know if you need a new login.

Cedar Class:

- Reading books and signed reading records need returning every Monday.
- New spelling letters have gone home. Copies are available on the class page.
- Please keep books in book bags every day so we can read with your child.
- Summer newsletter is on our class page on the website.
- Trip to Towneley Hall 17th June. Please order a packed lunch on School Grid if needed by 3 pm.

Elm Class:

- This half-term there is no weekly homework. Please continue to encourage your child to read each night and access TT Rock-stars.
- Reading books are swapped each Friday.
- P.E days are Tuesdays and Fridays, please ensure all children with long hair have a bobble.
- Spelling letters have been sent home. Please ask Mrs. Hudson if you need a spare!
- Library visits will be alternate Thursdays: 11/06/26, 25/06/26 09/07/26- last visit.

Larch Class:

- PE Monday and Thursday
- Reading Records due in on Monday
- Homework due in on Monday.
- Spelling test on Friday.

Maple Class:

- PE days are Monday and Thursday
- Spelling tests are on Fridays
- Reading books and Reading Records returned to school for changing on Fridays

Oak Class:

- For the children's weekly homework please can the lines be learned for the play.
- If your child wishes to get a library book then changing days will be now be Monday.
- PE days are Wednesday and Thursday.



Christ Church
CE Primary School

Growing and Learning Together in Christ

Head of School: Ms K. James

Diary Dates

Year 6 Monday 15th June—School nurse in class—puberty talk

Year 2 Wednesday 17th June — Trip to Towneley.

Wednesday 17th June— Class Photo Day

Friday 19th June—1-4 PM Wellbeing Café and little shop for big hero's.

Year 4 - Year 6— Monday 22nd June Sports Day 1.30-3.30

Year 6 Wednesday 24th June—Elton High School transition day.

Thursday 25th June—Mock trial finals (Selected pupils chosen from Year 6)

Thursday 25th June—New reception parents intake.

Tuesday 30th June — Sycamore Trust Concert at Bury Parish Church 1-3 pm.

Wednesday 1st July — Ukulele Summer Concert 2.30 pm

Year 6 Thursday 2nd July — Leavers' Service at Manchester Cathedral 9 am

Friday 3rd July—non-uniform £1

Year 6 Tuesday 7th July and Wednesday 8th July—Tottington High School transition day.

Cont.....

Diary Dates

Year 1- Year 3 Wednesday 8th July— Sports Day 1.45-3 PM .

EYFS Thursday 9th July- Sports Day 1.45—3.15 PM (Including stay and play)

Year 6 Thursday 9th July—Non-Uniform Day

Friday 10th July—Family colour run Non-Uniform (white for colour run)

Year 6 Friday 10th July— treat day to treetops.

Friday 10th July — End-of-Year Reports Sent Home

Monday 13th July — Parents' Evening Drop-In Sessions

Year 6 Monday 13th July—End of year production—6.30 pm

Year 6 Wednesday 15 July—End of year production—2 pm

Year 6 Friday 17th July—Christ Church leavers service 9.30 AM.

Friday 17th July — School Breaks Up for Summer at 2PM.

Wednesday 2nd September 2026—School reopens



THE FRIENDS OF CHRIST CHURCH

NEWSLETTER

RUN THE RAINBOW

FAMILY COLOUR RUN



CHECKLIST FOR GROWNUPS:

Book Colour Run Slots

This year grownups can take part too! Join the fun by booking your slot on School Money from 19th June. £1 per person.

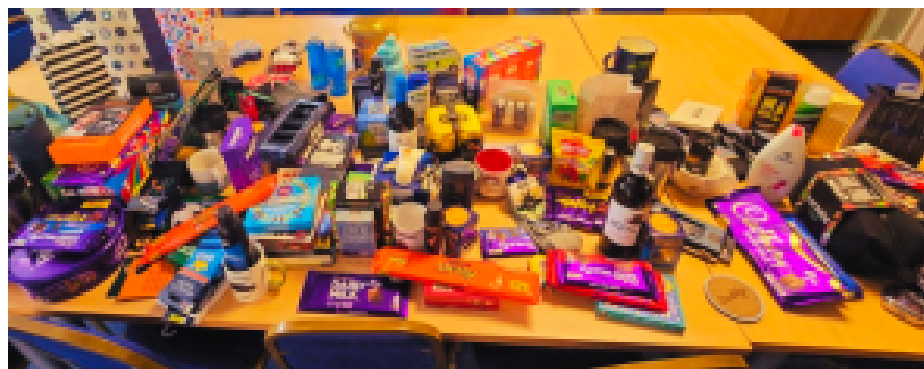
Return Run the Rainbow consent forms by 3rd July.

Consent forms **must** be completed for all those taking part in the colour run.

Complete and return Run the Rainbow sponsorship forms by 13th July.

An envelope will be provided for cash donations. Donations can also be made via Sum Up. Details will be on the sponsorship form.

THANK YOU FOR YOUR GENEROUS GIFTS FOR GENTS DONATIONS!



DATES FOR YOUR DIARY

Friday 19th June

Little Shop for Big Heroes, 1-4pm

In collaboration with The Wellbeing Warriors, we'll have gifts for sale for children to purchase for their Big Heroes.

You can now pay £2 per gift on School Money. Children will have the opportunity to choose a gift during the school day or after school in the hall.

Wellbeing Cafe, 2-4pm

See posters around school for this exciting fundraiser organised by the Wellbeing Warriors to raise money for guinea pigs! £2 per person can be given to class teachers in named envelope.

Run the Rainbow

Sponsorship Forms are also being sent home on Friday 19th June. Look out for these!

Friday 3rd July

Non-uniform Day

Children can bring a £1 donation to support costs of paint for the Run the Rainbow colour run.

Thursday 9th July

Year 6 Non-uniform Day

A special treat for our 2026 leavers, with £1 donations supporting their last Summer Fair at Christ Church.

Friday 10th July, 3.45pm

Run the Rainbow & Summer Fair

Please send children to school in clothes they can complete the colour run in and with eye protection. They will get very messy!



LITTLE SHOP FOR BIG HEROES



LITTLE SHOP FOR BIG HEROES

FRIDAY 19TH JUNE

Children will have the opportunity to purchase a 'Gift for Gents' at our little shop for big heroes for just £2. More than one ticket can be bought.


LITTLE SHOP FOR BIG HEROES

FOR JUST
£2



A GIFT
FOR THEIR
HERO!

Children will be taken to our in-school shop where they can choose a special gift for their hero, and we will help them wrap it to keep it a lovely surprise!



HOW TO BUY TICKETS




SCHOOL
MONEY

Tickets for 'Little Shop for Big Heroes' will be available on **SCHOOL MONEY** for **£2** from **8TH JUNE**.



Alternatively, children may bring **CASH INTO SCHOOL** on **FRIDAY 19TH JUNE**.



LITTLE SHOP
FOR BIG HEROES

Our 'Little Shop for Big Heroes' shop, along with the **TUCK SHOP**, will also be **OPEN AFTER SCHOOL UNTIL 4:00PM ON FRIDAY 19TH JUNE** for any last-minute purchases.



WELLBEING WARRIORS



are excited to invite you to our

WELLBEING CAFÉ



Let's care for our pets and our wellbeing!

to help raise money for a pair of school guinea pigs! Caring for pets helps children develop a sense of responsibility as well as being good for mental health and wellbeing.



The café will take place on **FRIDAY 19TH JUNE** between 2:00pm–4:00pm.



Tickets cost **£2** and include a hot drink (adults) or juice (children) and a cake/biscuit.



Please note children will need tickets as well as accompanying adults. We ask that parents/carers collect children from their classroom door (KS1 will be based in the Cabin) from 2pm onwards.



Tickets will be on sale from the week beginning **8TH JUNE**. Please bring the correct change in a sealed envelope.



We would also be very grateful for any bought cake/biscuit donations. If you would like to contribute, please bring donations into school during the week commencing **15TH JUNE**.

THANK YOU FOR HELPING US SUPPORT OUR SCHOOL AND OUR WELLBEING! ♥

Worry Management Webinar

For parents and carers of young people, this session will help you to:

- Better understand worry and anxiety
- Support your child to manage and overcome these feelings

Primary School

**Tuesday 16th
June
2026
6-7.30pm**

Step 1: To join our workshop please scan the QR code and complete the registration.



Step 2: Once registered a member of our team will send you an email with the link to access the webinar.

If you would like any further information
Please contact your school's mental health lead.



pcn-tr.burymhst@nhs.net



June Wellbeing Updates



Well-being Warriors Update:

Every Friday lunchtime, we have been running calming activities such as drawing, colour by number, yoga, scavenger hunts, reading and appreciating ourselves.

We are going to be running a Wellbeing Cafe on Friday 19th June to raise money for some school guinea pigs!

5- ways to wellbeing



For the month of June, our 5 ways to wellbeing focus is Be Active. You could: take up a new sport, scoot or cycle to school or join a sport's team We'd love to share picture of you being active In assembly. Send them in via Seesaw. .



Your moment to shine... **YASMIN, Y6**

Favourite food: cheesecake

Favourite sport: netball

The best thing about Christ Church is my friends

Favourite subject: English

I relax by doing art

What would you like the Wellbeing Warriors to do? More painting

Favourite book: The Diamond Girls

Staff Spotlight: Mrs Newby



My favourite subject to teach is... Science

At the weekend I enjoy..shopping, walking my dogs and reading
If I wasn't a teacher I would...own a shop selling bracelets and stationary



EVERY CHILD DESERVES AN

Specialist primary PE
and sports provision


edstart.org.uk


EDSTART

We're delighted to offer families of our partner schools, an exclusive **25% discount** on our Summer Holiday Clubs based at Bury Grammar School.




<https://edstart-bury.classforkids.io/camp/99>

This special offer is available for two weeks only, so now is the perfect time to secure your child's place for an action-packed summer.

 **25% OFF BGS Summer Holiday Clubs, no code required prices have already been discounted**

 **Offer ends: Tuesday 16th June**

This summer, children can choose from a fantastic range of activities, including:

-  Football
-  Multi-Sports
-  Dance & Gymnastics
-  Swimming

Our BGS Holiday Clubs provide children with the opportunity to stay active, develop new skills, build confidence, make friends and enjoy a wide range of exciting activities, all while benefiting from access to our outstanding sports facilities and experienced coaching staff.

Places are always in high demand during the school holidays, so we encourage families to book early and take advantage of this fantastic saving while it's available.

Don't miss out on this limited-time offer—secure your child's place today and give them a summer filled with sport, fun and new friendships.

**We are excited to present to you
Starting 21st April 2026**

Bury Neuro Hub



**Tailored support for families of
children / young people with Neurodiverse needs
(with or without a diagnosis)**

**This service is for parent/carers who would like support
and advice around their neurodiverse needs. Your
young person does not have to have a diagnosis to
access this service.**

Drop-in sessions are every

Tuesday & Thursday

9.30am – 3pm

**You can drop in or bookable appointments are
available on request if you prefer.**

Tel: 0161 762 1440

Email: jburns@buryneurohub.co.uk

Address: Phoenix House, 100 Brierley Street, Bury BL9 9HN

The Bury Neuro Hub Offer



Parent/Carers attend a Hub Drop In or Contact the Hub

Invitation to Neuro Hub Appointment offered.

- ✦ In person at the Hub
- ✦ Online
- ✦ Phone calls
- ✦ At school or college

Timely appointment given to discuss and to assess need and match with the correct support at the right time

Needs are Triaged -Signposted to support immediately.

- ★ Triaged as **Green = Getting Advice**
- ★ Triaged as **Amber = Getting Help**
- ★ Triaged as **Red = Getting More Help or Risk Support**

Families will all have access to the Getting advice stage whilst waiting for interventions. Families may also move through the quadrants where required.

Getting Advice

Signpost to relevant seminars held monthly (examples)
Autism and Anxiety –CAMHS * Sensory Processing – Rehabilitation for Independence * Emotional Dysregulation and Building Resilience – CAMHS * The Proud Trust * SENDIASS

Coffee Meetings- Offering a safe environment for families to meet and have a chat with others in the same situation. (Examples)

- Thinking Families
- Post Diagnostic
- Financial support

Information and Resources

- First Point Website / Social Media / Bury's Local Offer
- Advice on SEND and reasonable adjustments
- Social opportunities - local groups/ sessions for all members of the family.
- Local and National support groups for parents accessing universal services.
- Padlet's on various topics

Thriving in Bury for Children and Young People, Parents and Carers, Education, Professionals, Sensory Padlet, Neurodiversity Padlet Autism and ADHD

- "Can Do Approach" Speech and Language WhatsApp group
- Signpost parents / carers and professionals to the Bury Multi-agency Sensory Processing Needs Toolkit on the local offer

Peer to Peer Support

- Parent/carers and young people accessing support from peers when needed.

Getting Help

- **Navigator 1-1 support** for 4-6 weeks support
- **Access to IBASIS and SACS-r** age 12 to 24 months
- **Access to PACT** age 2-10-year-old
- Paediatric Autism Communication Therapy an evidence-based intervention that works through video feedback techniques
- Access to **Post Diagnostic Courses ADHD and Autism**
- **Financial Support with DLA, PIP and Charity Forms**
- **Onward referral** Where needed referrals into services will be actioned to gain the correct support for the family's level of need

Getting More Help

Thinking Families - This is a 6-week course –

The group intervention aims to support carers to understand their child's relational and attachment needs, in order to develop different strategies and ideas for supporting their children in a way that increases their sense of security and well-being and improve their behaviour. delivered by Bury CAMHS, in partnership with First Point

Riding the Rapids 10 weeks training course

Courses will be running in separate age groups

- ✓ Early Years
- ✓ Primary age children
- ✓ Secondary age children

Available to parent/carers of children/young people with a diagnosis of Autism, are on the waiting list for a diagnosis. It is also for parent/ carers of children/ young people with significant learning/ intellectual disabilities.

Getting Risk Support

This person will be there for emotional support for the families in line with Care Plan approach, attending and supporting at meetings where necessary.
As required collaborative support (systemic practice)



Autism
Central



For more information visit
www.autismcentral.nhs.uk



Delivered by
Anna Freud

Session guidance

How to register and join online Autism Central sessions - England's Peer Education Programme | Autism Central

1. Go to the [Autism Central events page](#) or use this monthly learning timetable to find a session/sessions you would like to attend.
2. Navigate the webpage to find a session or sessions you would like to attend, you can use filters to filter by different session types.

Alternatively, you can use this learning timetable to go to the webpage of a session by clicking "link".

3. Once you find a session to attend, click "book now".
4. You'll be prompted to provide your details and create an account (optional).
5. A member of our team will send you a Zoom registration link on the day of the session.

Please note – once registered via the Zoom registration link you will receive from a member of our team, you will receive an automated email from Zoom containing the actual link to follow to join the Zoom meeting.

For any help on joining or enquires, please email: neurodiversity@annafreud.org

In Conversation and Masterclass Sessions

In conversation			
Date	Time	Session title	Booking link
Friday, 8 May	12:00-13:00	Interests as an opportunity for autistic joy with Dr Amy Pearson	Link
Friday, 22 May	12:00-13:00	Friendships and relationships in autistic young people with Dr Felicity Sedgewick	Link
Friday, 5 June	12:00-13:00	What a "good life" might look like for autistic people with a learning disability with Stephen Unwin	Link
Friday, 26 June	12:00-13:00	Beyond behaviour... respecting your child's monotropic flow with Alexis Quinn	Link
Friday, 26 June	12:00-13:00	Autistic people's experiences of emergency departments: what families need to know with Ben Potts	Link
Friday, 17 July	12:00-13:00	Understanding autistic young people's experiences of mainstream primary schools with Jo Billington	Link



Autism
Central



For more information visit
www.autismcentral.nhs.uk



Delivered by
Anna Freud