



Christ Church
CE Primary School

Growing and Learning Together in Christ

Head of School: Mrs K James

CHRIST CHURCH NEWSLETTER

Friday 5th June 2026, Issue 29

Weekly News & Updates

Monday:

Guitar Lessons

Wednesday:

Singing Lessons/Ukulele

Please see at the end of the newsletter links for parent workshops about support for children and families with Autism and ADHD.

Ice pops will be on sale Mondays, Wednesdays and Friday at break and after school.

Ice pop 50p
Ice lollies £1

Please follow us on Facebook for our weekly pictures.

Summer 2 clubs. W/C 08/06/26.

Monday:

- YR4 Multiplication check
- YR1 Phonics Check

Tuesday:

- Gardening/Eco Club 12.30.
- YRS1-3 Summer Games 3.30-4.30

Wednesday:

- Ambassadors Club 12.45
- YR6 Robinwood

Thursday:

- YRS 4-6 Summer Sports 3.30-4.30
- YR6 Robinwood

Friday:

- Wellbeing club
- Choir
- YR6 Robinwood

Class attendance this week:

- Reception 91%
- Ash 97%
- Cedar 99%
- Elm 96%
- Larch 98%
- Maple 96%
- Oak 95%

This week's home reading champion:

Elm and Maple 88%

Golden Book Stars of the week.

Nursery

Athena, Ada, Riley

Reception

Elias, Atlehang, Yasmin

Ash

Lydia, Meda,

Cedar

Olivia, Keira,

Elm

Cal, Zach,

Larch

Freya, Eva,

Maple

Lilly, Eleanor, Azaan

Oak

Elliott, Evelyn,

Mrs James

Jake

House Points

Howarth— 860

Wood - 870

Peel - 824

Kay - 782

You are now able to book before & after school club sessions via School Money for the week commencing 8th June & 15th June.

Please remember to pre book your sessions on School Money. Please remain with your children in the morning until the club door opens at 7.45, this is for your children's safety. Club is open to all children from Nursery to Year 6.



Summer 2 Class Reminders

Seedlings Class:

- Please can you send in a spare pair of wellies to leave under their peg.
- P.E is on a Thursday
- Please provide your child with a sun hat and suncream on sunny days now we are having nice weather.
- Please can all Nursery Rhyme packs be returned to school.
- Your child will now be bringing home a story sack every Thursday.

Saplings Class:

- PE - Tuesday - PE kit needed.
- Sharing books will be changed on a Tuesday.
- Reading books changed on a Friday.

Ash Class

- Reading books will be changed every Friday. Please ensure reading records are signed.
- Spelling tests will take place each Friday.
- Our PE day is Tuesday.
- Don't forget to log in to Seesaw and see what your child has been up to at school-Please let Miss Founde know if you need a new login.

Cedar Class:

- Reading books and signed reading records need returning every Monday.
- New spelling letters have gone home. Copies are available on the class page.
- Please keep books in book bags every day so we can read with your child.
- Summer newsletter is on our class page on the website.
- Trip to Towneley Hall 17th June.

Elm Class:

- This half-term there is no weekly homework. Please continue to encourage your child to read each night and access TT Rock-stars.
- Reading books are swapped each Friday.
- P.E days are Tuesdays and Fridays, please ensure all children with long hair have a bobble.
- Spelling letters have been sent home. Please ask Mrs. Hudson if you need a spare!
- Library visits will be alternate Thursdays: 11/06/26, 25/06/26 09/07/26- last visit.

Larch Class:

- PE Monday and Thursday
- Reading Records due in on Monday
- Homework due in on Monday.
- Spelling test on Friday.

Maple Class:

- PE days are Monday and Thursday
- Spelling tests are on Fridays
- Reading books and Reading Records returned to school for changing on Fridays

Oak Class:

- For the children's weekly homework please can the lines be learned for the play.
- If your child wishes to get a library book then changing days will be now be Monday.
- PE days are Wednesday and Thursday.



Christ Church
CE Primary School

Growing and Learning Together in Christ

Head of School: [Mrs K. James](#)

Diary Dates

Year 4 W/C 8th June—Multiplication check

Year 1 W/C 8th June—Phonics check

Year 6 10-12th June — Robinwood Residential

Year 6 Monday 15th June—School nurse in class—puberty talk

Year 2 Wednesday 17th June — Trip to Towneley.

Wednesday 17th June— Class Photo Day

Friday 19th June—1-4 PM Wellbeing Café and little shop for big hero's.

Year 4 - Year 6— Monday 22nd June Sports Day 1.30-3.30

Year 6 Wednesday 24th June—Elton High School transition day.

Thursday 25th June—Mock trial finals (Selected pupils chosen from Year 6)

Thursday 25th June—New reception parents intake.

Tuesday 30th June — Sycamore Trust Concert at Bury Parish Church 1-3 pm.

Wednesday 1st July — Ukulele Summer Concert 2.30 pm

Year 6 Thursday 2nd July — Leavers' Service at Manchester Cathedral 9 am

Friday 3rd July—non-uniform £1

Year 6 Tuesday 7th July and Wednesday 8th July—Tottington High School transition day.

Cont.....

Diary Dates

Year 1- Year 3 Wednesday 8th July— Sports Day 1.45-3 PM .

EYFS Thursday 9th July- Sports Day 1.45—3.15 PM (Including stay and play)

Year 6 Thursday 9th July—Non-Uniform Day

Friday 10th July—Family colour run Non-Uniform (white for colour run)

Year 6 Friday 10th July— treat day to treetops.

Friday 10th July — End-of-Year Reports Sent Home

Monday 13th July — Parents' Evening Drop-In Sessions

Year 6 Monday 13th July—End of year production—6.30 pm

Year 6 Wednesday 15 July—End of year production—2 pm

Year 6 Friday 17th July—Christ Church leavers service 9.30 AM.

Friday 17th July — School Breaks Up for Summer at 2PM.

Wednesday 2nd September 2026—School reopens



THE FRIENDS OF CHRIST CHURCH

NEWSLETTER

DOUGHNUT FORGET!



Final reminder that Krispy Kreme Original Glazed doughnuts will be on sale today (22nd May) from 3.25pm in the school car park.
Pay by cash or card.
Tuck shop also available.
Thank you to our tuck shop helpers below!



DATES FOR YOUR DIARY

**Friday 5th June
Non-uniform Day**
Instead of wearing uniform, we're asking children to bring in a small gift or donation suitable for men such as toiletries, socks, chocolates or other thoughtful items. This will support our "Little Gifts for Big Heroes" event.

**Friday 19th June, 1-4pm
Little Gifts for Big Heroes**

In collaboration with The Wellbeing Warriors, we'll have gifts for sale for children to purchase for their Big Heroes. More details to follow.

**Friday 26th June
Year 6 Non-uniform Day**
A special treat for our 2026 leavers, with £1 donations supporting their last Summer Fair at Christ Church.

**Friday 3rd July
Non-uniform Day**
Children can support our upcoming Summer Fair event with a £1 donation.

**Friday 10th July, 3.45pm
Summer Fair Event**
Details of this event will be in next month's newsletter so look out for that.

We look forward to seeing you all at these events. Thank you for your continued support.

CAN YOU MAKE A DIFFERENCE?

Friends are looking for volunteers to join us as we step into this promising new chapter.

If you would like to play a direct role in shaping an exciting and engaging school environment for our children, email friendsccw1862@gmail.com to express your interest.

GIFTS FOR GENTS



LITTLE SHOP FOR BIG HEROES



NON-UNIFORM DAY FRIDAY 5TH JUNE

We are inviting children to enjoy a non-uniform day in exchange for a donated gift for our 'Gifts for Gents' shop.

GIFT IDEAS COULD INCLUDE:



MUGS



SMALL
GIFT SETS



SOCKS



KEYRING



CHOCOLATE



AND OTHER
SMALL GIFTS

Thank you for your generosity and support! ♥

LITTLE SHOP FOR BIG HEROES

FRIDAY 19TH JUNE

Children will have the opportunity to purchase a 'Gift for Gents' at our little shop for big heroes for just £2.

LITTLE SHOP FOR BIG HEROES

FOR JUST

£2

A GIFT
FOR THEIR
HERO!

Children will be taken to our in-school shop where they can choose a special gift for their hero, and we will help them wrap it to keep it a lovely surprise!

HOW TO BUY TICKETS

SCHOOL
MONEY

Tickets for 'Little Shop for Big Heroes' will be available on **SCHOOL MONEY** for **£2** from **8TH JUNE**.



Alternatively, children may bring **CASH INTO SCHOOL** on **FRIDAY 19TH JUNE**.



Our 'Little Shop for Big Heroes' shop, along with the **TUCK SHOP**, will also be **OPEN AFTER SCHOOL UNTIL 4:00PM ON FRIDAY 19TH JUNE** for any last-minute purchases.

THANK YOU FOR SUPPORTING OUR SCHOOL EVENT!

June Wellbeing Updates



Well-being Warriors Update:

Every Friday lunchtime, we have been running calming activities such as drawing, colour by number, yoga, scavenger hunts, reading and appreciating ourselves.

We are going to be running a Wellbeing Cafe on Friday 19th June to raise money for some school guinea pigs!

5- ways to wellbeing



For the month of June, our 5 ways to wellbeing focus is Be Active. You could: take up a new sport, scoot or cycle to school or join a sport's team We'd love to share picture of you being active In assembly. Send them in via Seesaw. .



Your moment to shine... **YASMIN, Y6**

Favourite food: cheesecake

Favourite sport: netball

The best thing about Christ Church is my friends

Favourite subject: English

I relax by doing art

What would you like the Wellbeing Warriors to do? More painting

Favourite book: The Diamond Girls

Staff Spotlight: Mrs Newby



My favourite subject to teach is... Science

At the weekend I enjoy..shopping, walking my dogs and reading
If I wasn't a teacher I would...own a shop selling bracelets and stationary



EVERY CHILD DESERVES AN

Specialist primary PE
and sports provision


edstart.org.uk


EDSTART

We're delighted to offer families of our partner schools, an exclusive **25% discount** on our Summer Holiday Clubs based at Bury Grammar School.



<https://edstart-bury.classforkids.io/camp/99>

This special offer is available for two weeks only, so now is the perfect time to secure your child's place for an action-packed summer.

 **25% OFF BGS Summer Holiday Clubs, no code required prices have already been discounted**

 **Offer ends: Tuesday 16th June**

This summer, children can choose from a fantastic range of activities, including:

-  Football
-  Multi-Sports
-  Dance & Gymnastics
-  Swimming

Our BGS Holiday Clubs provide children with the opportunity to stay active, develop new skills, build confidence, make friends and enjoy a wide range of exciting activities, all while benefiting from access to our outstanding sports facilities and experienced coaching staff.

Places are always in high demand during the school holidays, so we encourage families to book early and take advantage of this fantastic saving while it's available.

Don't miss out on this limited-time offer—secure your child's place today and give them a summer filled with sport, fun and new friendships.

**We are excited to present to you
Starting 21st April 2026**

Bury Neuro Hub



**Tailored support for families of
children / young people with Neurodiverse needs
(with or without a diagnosis)**

**This service is for parent/carers who would like support
and advice around their neurodiverse needs. Your
young person does not have to have a diagnosis to
access this service.**

Drop-in sessions are every

Tuesday & Thursday

9.30am – 3pm

**You can drop in or bookable appointments are
available on request if you prefer.**

Tel: 0161 762 1440

Email: jburns@buryneurohub.co.uk

Address: Phoenix House, 100 Brierley Street, Bury BL9 9HN

The Bury Neuro Hub Offer



Parent/Carers attend a Hub Drop In or Contact the Hub

Invitation to Neuro Hub Appointment offered.

- ✦ In person at the Hub
- ✦ Online
- ✦ Phone calls
- ✦ At school or college

Timely appointment given to discuss and to assess need and match with the correct support at the right time

Needs are Triaged -Signposted to support immediately.

- ★ Triaged as **Green = Getting Advice**
- ★ Triaged as **Amber = Getting Help**
- ★ Triaged as **Red = Getting More Help or Risk Support**

Families will all have access to the Getting advice stage whilst waiting for interventions. Families may also move through the quadrants where required.

Getting Advice

Signpost to relevant seminars held monthly (examples)
Autism and Anxiety –CAMHS * Sensory Processing – Rehabilitation for Independence * Emotional Dysregulation and Building Resilience – CAMHS * The Proud Trust * SENDIASS

Coffee Meetings- Offering a safe environment for families to meet and have a chat with others in the same situation. (Examples)

- Thinking Families
- Post Diagnostic
- Financial support

Information and Resources

- First Point Website / Social Media / Bury's Local Offer
- Advice on SEND and reasonable adjustments
- Social opportunities - local groups/ sessions for all members of the family.
- Local and National support groups for parents accessing universal services.
- Padlet's on various topics

Thriving in Bury for Children and Young People, Parents and Carers, Education, Professionals, Sensory Padlet, Neurodiversity Padlet Autism and ADHD

- "Can Do Approach" Speech and Language WhatsApp group
- Signpost parents / carers and professionals to the Bury Multi-agency Sensory Processing Needs Toolkit on the local offer

Peer to Peer Support

- Parent/carers and young people accessing support from peers when needed.

Getting Help

- **Navigator 1-1 support** for 4-6 weeks support
- **Access to IBASIS and SACS-r** age 12 to 24 months
- **Access to PACT** age 2-10-year-old
- Paediatric Autism Communication Therapy an evidence-based intervention that works through video feedback techniques
- Access to **Post Diagnostic Courses ADHD and Autism**
- **Financial Support with DLA, PIP and Charity Forms**
- **Onward referral** Where needed referrals into services will be actioned to gain the correct support for the family's level of need

Getting More Help

Thinking Families - This is a 6-week course –

The group intervention aims to support carers to understand their child's relational and attachment needs, in order to develop different strategies and ideas for supporting their children in a way that increases their sense of security and well-being and improve their behaviour. delivered by Bury CAMHS, in partnership with First Point

Riding the Rapids 10 weeks training course

Courses will be running in separate age groups

- ✓ Early Years
- ✓ Primary age children
- ✓ Secondary age children

Available to parent/carers of children/young people with a diagnosis of Autism, are on the waiting list for a diagnosis. It is also for parent/ carers of children/ young people with significant learning/ intellectual disabilities.

Getting Risk Support

This person will be there for emotional support for the families in line with Care Plan approach, attending and supporting at meetings where necessary.
As required collaborative support (systemic practice)



Autism
Central

NHS

For more information visit
www.autismcentral.nhs.uk



Delivered by
Anna Freud

Session guidance

How to register and join online Autism Central sessions - England's Peer Education Programme | Autism Central

1. Go to the [Autism Central events page](#) or use this monthly learning timetable to find a session/sessions you would like to attend.
2. Navigate the webpage to find a session or sessions you would like to attend, you can use filters to filter by different session types.

Alternatively, you can use this learning timetable to go to the webpage of a session by clicking "link".

3. Once you find a session to attend, click "book now".
4. You'll be prompted to provide your details and create an account (optional).
5. A member of our team will send you a Zoom registration link on the day of the session.

Please note – once registered via the Zoom registration link you will receive from a member of our team, you will receive an automated email from Zoom containing the actual link to follow to join the Zoom meeting.

For any help on joining or enquires, please email: neurodiversity@annafreud.org

In Conversation and Masterclass Sessions

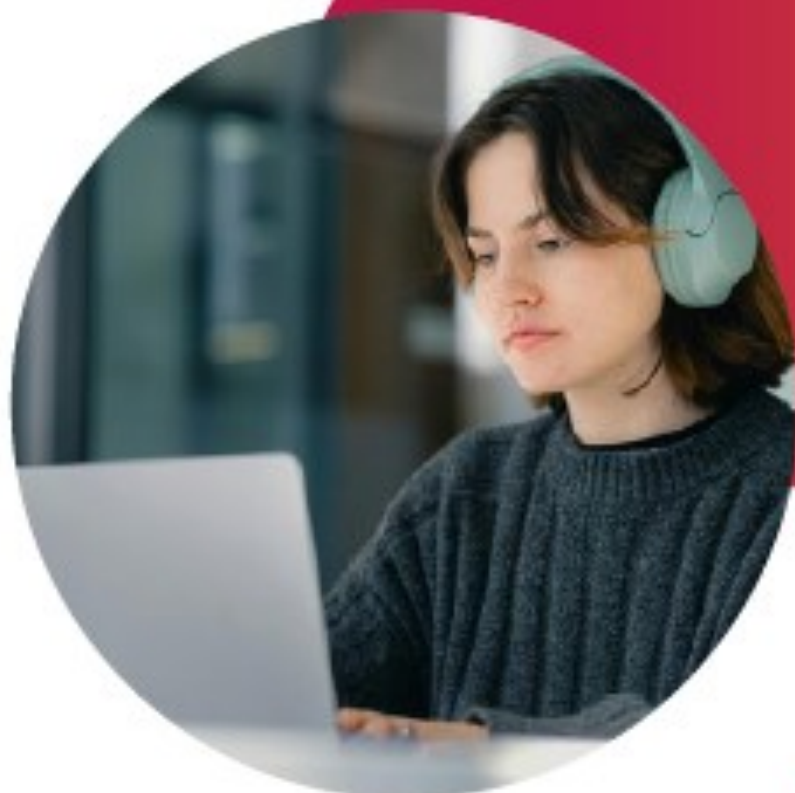
In conversation			
Date	Time	Session title	Booking link
Friday, 8 May	12:00-13:00	Interests as an opportunity for autistic joy with Dr Amy Pearson	Link
Friday, 22 May	12:00-13:00	Friendships and relationships in autistic young people with Dr Felicity Sedgewick	Link
Friday, 5 June	12:00-13:00	What a "good life" might look like for autistic people with a learning disability with Stephen Unwin	Link
Friday, 26 June	12:00-13:00	Beyond behaviour... respecting your child's monotropic flow with Alexis Quinn	Link
Friday, 26 June	12:00-13:00	Autistic people's experiences of emergency departments: what families need to know with Ben Potts	Link
Friday, 17 July	12:00-13:00	Understanding autistic young people's experiences of mainstream primary schools with Jo Billington	Link



Autism
Central



For more information visit
www.autismcentral.nhs.uk



Delivered by
Anna Freud