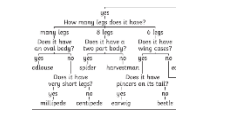








Year 4 - Summer 1 - Grouping Living Things - Why is a rabbit not a reptile?

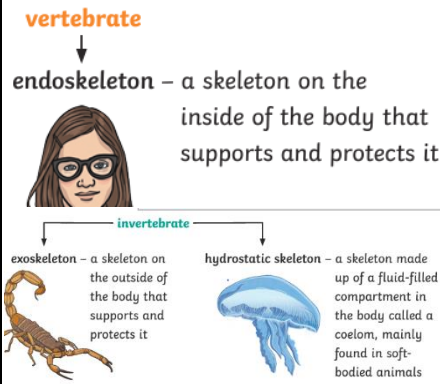
Key Vocabulary

<p>Classification</p> 	<p>This is where plants or animals are placed into groups according to their similarities.</p>
<p>Vertebrates</p> 	<p>Animals with a backbone</p>
<p>Invertebrates</p> 	<p>Animals without a backbone.</p>
<p>Specimen</p> 	<p>A particular plant or animal that scientists study to find out about its species.</p>
<p>Characteristics</p> 	<p>The distinguishing features or qualities that are specific to a species</p>
<p>Environment</p> 	<p>An environment contains many habitats and these include areas where there are both living and non-living things.</p>
<p>Habitat</p> 	<p>The specific area or place in which particular animals or plants may live.</p>

Prior knowledge

In Year 3 we:

- Identified that animals, including humans, need the right types and amount of nutrition, and that they cannot make their own food; they get nutrition from what they eat
- Identified that humans and some other animals have skeletons and muscles for support, protection and movement.

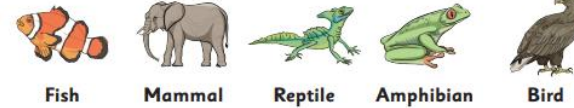


Knowledge and Assessment:

- Recognise that living things can be grouped in a variety of ways.
- Explore and use classification keys to help group, identify and name a variety of living things in their local and wider environment.

Sticky Knowledge

We can group animals into **five different groups** based on their characteristics.



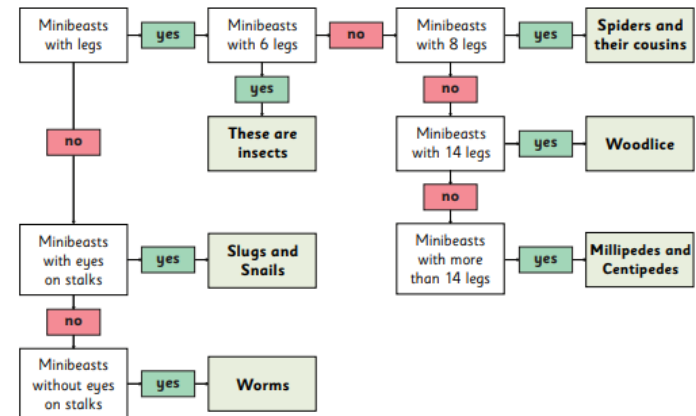
How else can we group animals?

We can also group animals based on the **types of food** they eat.



Classification keys usually have statements or questions that describe some of the **features** or **characteristics**. You have to answer either **yes** or **no**. Your answer will then take you to another **question** or **statement** OR the **type of living thing**.

This one looks at **amount of legs** the living thing has and the **placement of their eyes**.



- Invertebrates**
- slug
 - snail
 - butterfly
 - spider
 - crab
 - bee
 - jellyfish

- Vertebrates**
- dog
 - cat
 - human
 - lion
 - bird
 - shark
 - tiger