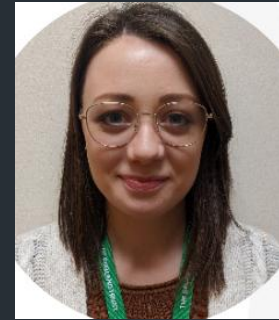


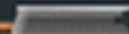
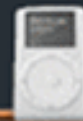
# Riddles

- Have a go at trying to solve the riddles whilst we wait.
- Where is the only place in the world which today comes before yesterday?
- 3 girls share an umbrella on the way to school but none of them get wet. How?

# Meet the Teacher!



Mr. Jackson, Mrs Grundy and  
Miss Kidd



# The school day

- Doors open at 8:45am. Children to come in on their own through the entrance at the side of Year 6. If late – go through the office.
- Morning break – 10:20am – 10:35am
- Lunch – 12:15pm – 1:15pm
- End of day – 3:30pm

# Lunches, Snacks and Water

Healthy packed lunches or school dinner to be ordered on school grid.

Fruit can be brought in as a snack for break times.

Only water in water bottles allowed.

Can order milk for break time.

# The curriculum

- Daily Maths – Follow MNP mastery approach.
- Daily English – Class books this half term will be ‘Stay where you are and then leave’ – History links
- Guided Reading – 3 x week. VIPERS. Written comprehensions, films and images.

- History focus in the Autumn term – World Wars
- French
- Computing
- RE
- PSHCE
- Science
- Music
- PE
- Art/DT

Children receive a broad and balanced curriculum.

- PE days are Tuesdays and Wednesdays.
- There is an expectation that all pupils will wear plain blue/white t-shirts and plain blue/black shorts/joggers.
- Coats/jumpers depending on the weather.
- Long hair to be tied up on these days please.

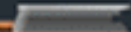
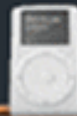
# Homework

- The children have been given a HLC- we expect a minimum of two activities completed but no more than four. To be handed in by 5<sup>th</sup> December. (SATs homework will be later on in the year)
- Reading books – changed on Thursdays. Must be returned with a signed reading record
- Spellings- On the website if wanting to practice.

# Rewards and Sanctions

Everybody at CCW believes in praising positive behaviour and hard work!

- House points
- Recognition Board
- Golden Book
- Merits

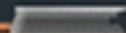


# Rewards and Sanctions

- Remind
- Response
- Reset
- Repair.
- Think again room will be used as last resort/continuous breaking of school promises. If a child is in think again 3 or more times a half term, they will have a week off the yard.

# Tables

Will change every half term.



# Trips

- Robinwood – 10<sup>th</sup> – 12<sup>th</sup> June – Deposit date was 11<sup>th</sup> July. Total cost of £380 to be paid by 22<sup>nd</sup> May 2026.
- Bikeability – 20<sup>th</sup>, 21<sup>st</sup>, 22<sup>nd</sup> October.
- VR experience day – January – More information will follow.

# Bikeability

- Come to school with bike but if possible please take it back home each day as there is a lack of storage in school.
- Must have a helmet.
- Children to wear joggers and trainers but top half still normal school uniform.
- Dress for the weather.

# General Reminders

Uniform and PE kit-names in clothes

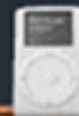
PE on a Tuesday and Wednesday

Reading books changed on Thursdays

No need to have their own pencil cases

Please don't bring sweets in on birthdays

Follow on twitter @ccwalshaw and please read the weekly newsletter for updates.



# Mobile Phones

- Walking to and from school/ turned off at the gate.
- No pictures-GDPR
- Your responsibility to check the apps your child is using e.g. whats app 16 years old and facebook is 13 years old.
- Will make you aware of any incidents
- Report to the police.

# High School

You need to be thinking about what high school you would like your child to go to and apply online. There was a text sent out with this information on last week.

Regularly check the high schools that you are interested in for any important dates. We will share if they are passed on to us. High schools don't always share this information with us.