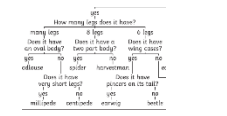
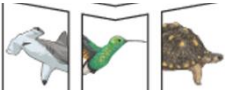







Year 4 - Autumn term Grouping Living Things - Why is a rabbit not a reptile?

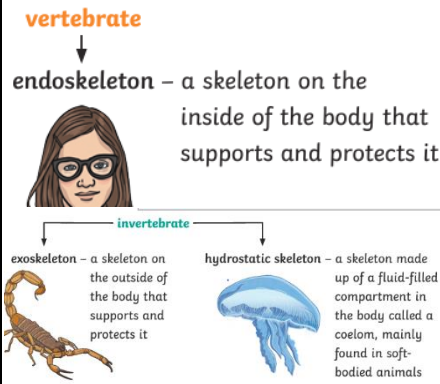
Key Vocabulary

 <p>Classification</p>	This is where plants or animals are placed into groups according to their similarities.
 <p>Vertebrates</p>	Animals with a backbone
 <p>Invertebrates</p>	Animals without a backbone.
 <p>Specimen</p>	A particular plant or animal that scientists study to find out about its species.
 <p>Characteristics</p>	The distinguishing features or qualities that are specific to a species
 <p>Environment</p>	An environment contains many habitats and these include areas where there are both living and non-living things.
 <p>Habitat</p>	The specific area or place in which particular animals or plants may live.

Prior knowledge

In Year 3 we:

- Identified that animals, including humans, need the right types and amount of nutrition, and that they cannot make their own food; they get nutrition from what they eat
- Identified that humans and some other animals have skeletons and muscles for support, protection and movement.

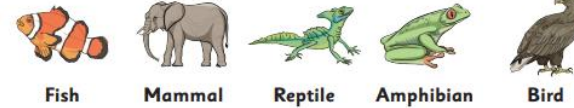


Knowledge and Assessment:

- Recognise that living things can be grouped in a variety of ways.
- Explore and use classification keys to help group, identify and name a variety of living things in their local and wider environment.

Sticky Knowledge

We can group animals into **five different groups** based on their characteristics.



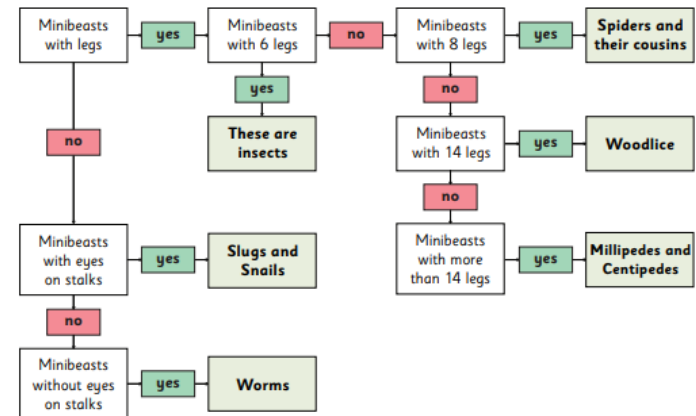
How else can we group animals?

We can also group animals based on the **types of food** they eat.



Classification keys usually have statements or questions that describe some of the **features** or **characteristics**. You have to answer either **yes** or **no**. Your answer will then take you to another **question** or **statement** OR the **type of living thing**.

This one looks at **amount of legs** the living thing has and the **placement of their eyes**.



Invertebrates

slug
snail
butterfly
spider
crab
bee
jellyfish

Vertebrates

dog
cat
human
lion
bird
shark
tiger